

Product datasheet for **TA344377**

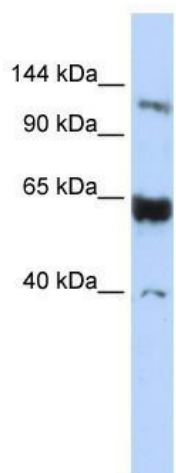
SCP1 (SYCP1) Rabbit Polyclonal Antibody

Product data:

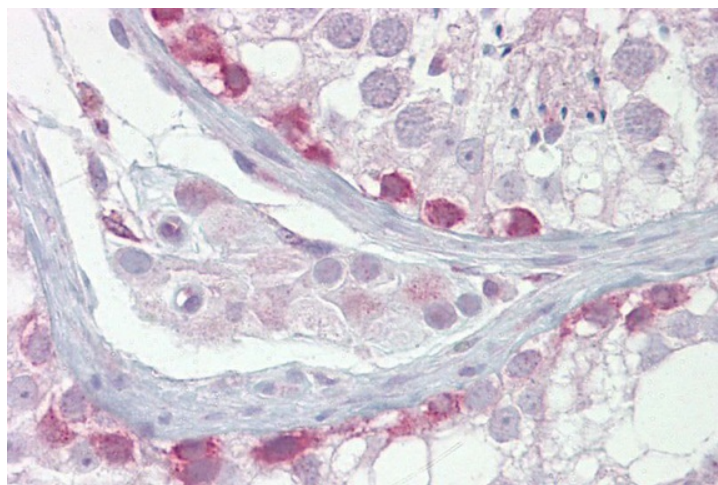
Product Type:	Primary Antibodies
Applications:	IHC, WB
Recommended Dilution:	WB, IHC
Reactivity:	Human
Host:	Rabbit
Isotype:	IgG
Clonality:	Polyclonal
Immunogen:	The immunogen for anti-SYCP1 antibody: synthetic peptide directed towards the N terminal of human SYCP1. Synthetic peptide located within the following region: NFLPVLEQVGNSDCHYQEGLKDSLENSEGLSRVYSKLYKEAEKIKKWKV
Formulation:	Liquid. Purified antibody supplied in 1x PBS buffer with 0.09% (w/v) sodium azide and 2% sucrose. <i>Note that this product is shipped as lyophilized powder to China customers.</i>
Purification:	Affinity Purified
Conjugation:	Unconjugated
Storage:	Store at -20°C as received.
Stability:	Stable for 12 months from date of receipt.
Predicted Protein Size:	107 kDa
Gene Name:	synaptonemal complex protein 1
Database Link:	NP_003167 Entrez Gene 6847 Human Q15431
Background:	SYCP1 is a major component of the transverse filaments of synaptonemal complexes (SCS), which is formed between homologous chromosomes during meiotic prophase.
Synonyms:	CT8; HOM-TES-14; SCP-1; SCP1
Note:	Immunogen Sequence Homology: Human: 100%; Dog: 93%; Pig: 93%; Horse: 93%; Bovine: 93%; Rabbit: 93%; Guinea pig: 86%; Rat: 79%; Mouse: 79%



[View online »](#)

Product images:

WB Suggested Anti-SYCP1 Antibody Titration: 0.2-1 ug/ml; ELISA Titer: 1:312500; Positive Control: Jurkat cell lysate



Immunohistochemistry with Testis tissue at an antibody concentration of 5 ug/ml using anti-SYCP1 antibody