

Product datasheet for **TA344376**

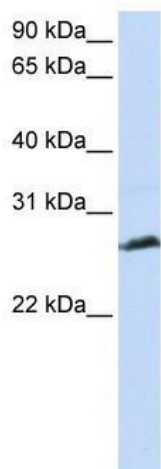
SCP3 (SYCP3) Rabbit Polyclonal Antibody

Product data:

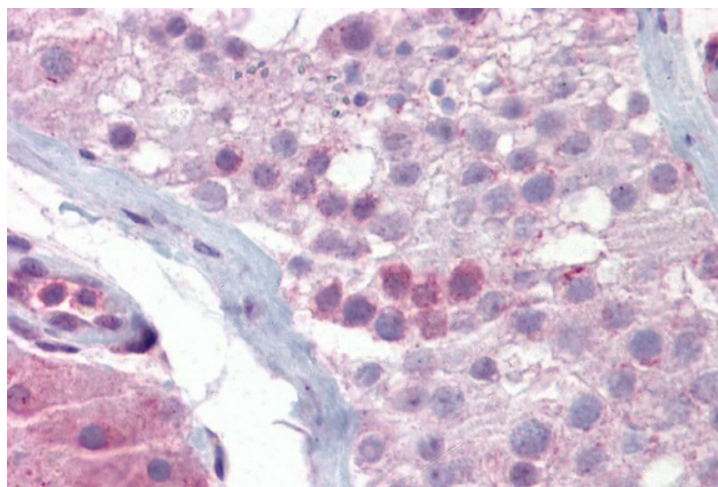
Product Type:	Primary Antibodies
Applications:	IHC, WB
Recommended Dilution:	WB, IHC
Reactivity:	Human
Host:	Rabbit
Isotype:	IgG
Clonality:	Polyclonal
Immunogen:	The immunogen for anti-SYCP3 antibody: synthetic peptide directed towards the N terminal of human SYCP3. Synthetic peptide located within the following region: VSSGKKYSRKSGKPSVEDQFTRAYDFETEDKKDLGSEEDVIEGKTAVIE
Formulation:	Liquid. Purified antibody supplied in 1x PBS buffer with 0.09% (w/v) sodium azide and 2% sucrose. <i>Note that this product is shipped as lyophilized powder to China customers.</i>
Purification:	Affinity Purified
Conjugation:	Unconjugated
Storage:	Store at -20°C as received.
Stability:	Stable for 12 months from date of receipt.
Predicted Protein Size:	26 kDa
Gene Name:	synaptonemal complex protein 3
Database Link:	NP_710161 Entrez Gene 50511 Human Q8IZU3
Background:	SYCP3 is a component of the transverse filaments of synaptonemal complexes (SCS), formed between homologous chromosomes during meiotic prophase. It has an essential meiotic function in spermatogenesis. SYCP3 may be important for testis development.
Synonyms:	COR1; SCP3; SPGF4
Note:	Immunogen Sequence Homology: Human: 100%



[View online »](#)

Product images:

WB Suggested Anti-SYCP3 Antibody Titration: 0.2-1 ug/ml; ELISA Titer: 1:312500; Positive Control: Jurkat cell lysate



Immunohistochemistry with Testis tissue at an antibody concentration of 5 ug/ml using anti-SYCP3 antibody