

Product datasheet for **TA344371**

TLK2 Rabbit Polyclonal Antibody

Product data:

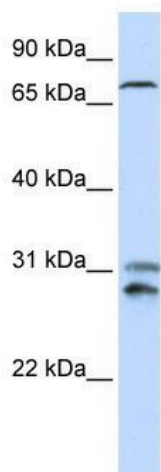
Product Type:	Primary Antibodies
Applications:	WB
Recommended Dilution:	WB
Reactivity:	Human
Host:	Rabbit
Isotype:	IgG
Clonality:	Polyclonal
Immunogen:	The immunogen for anti-TLK2 antibody: synthetic peptide directed towards the N terminal of human TLK2. Synthetic peptide located within the following region: VSAQQNSPSTGSGNTEHSCSSQKQISIQHRQTQSDLTIEKISALENSKN
Formulation:	Liquid. Purified antibody supplied in 1x PBS buffer with 0.09% (w/v) sodium azide and 2% sucrose. <i>Note that this product is shipped as lyophilized powder to China customers.</i>
Purification:	Affinity Purified
Conjugation:	Unconjugated
Storage:	Store at -20°C as received.
Stability:	Stable for 12 months from date of receipt.
Predicted Protein Size:	82 kDa
Gene Name:	tousled like kinase 2
Database Link:	NP_006843 Entrez Gene 11011 Human Q86UE8
Background:	The Tousled-like kinases, first described in Arabidopsis, are nuclear serine/threonine kinases that are potentially involved in the regulation of chromatin assembly.
Synonyms:	HsHPK; PKU-ALPHA
Note:	Immunogen Sequence Homology: Dog: 100%; Pig: 100%; Rat: 100%; Horse: 100%; Human: 100%; Mouse: 100%; Bovine: 100%; Rabbit: 100%; Guinea pig: 100%



[View online »](#)

Protein Families: Druggable Genome, Protein Kinase

Product images:



WB Suggested Anti-TLK2 Antibody Titration: 0.2-1 ug/ml; ELISA Titer: 1:62500; Positive Control: 721_B cell lysate TLK2 is strongly supported by BioGPS gene expression data to be expressed in Human 721_B cells