

Product datasheet for **TA344367**

ZW10 Rabbit Polyclonal Antibody

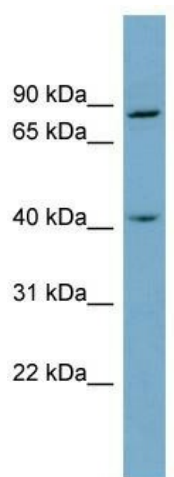
Product data:

Product Type:	Primary Antibodies
Applications:	WB
Recommended Dilution:	WB
Reactivity:	Human
Host:	Rabbit
Isotype:	IgG
Clonality:	Polyclonal
Immunogen:	The immunogen for anti-ZW10 antibody: synthetic peptide directed towards the N terminal of human ZW10. Synthetic peptide located within the following region: DLLKSRIESEVRRDLHVSTGEFTDLKQQLERDSVLSLLKQLQEFSTAIE
Formulation:	Liquid. Purified antibody supplied in 1x PBS buffer with 0.09% (w/v) sodium azide and 2% sucrose.
Purification:	Affinity Purified
Conjugation:	Unconjugated
Storage:	Store at -20°C as received.
Stability:	Stable for 12 months from date of receipt.
Predicted Protein Size:	86 kDa
Gene Name:	zw10 kinetochore protein
Database Link:	NP_004715 Entrez Gene 9183 Human O43264
Background:	This gene encodes a protein that is one of many involved in mechanisms to ensure proper chromosome segregation during cell division. The encoded protein binds to centromeres during the prophase, metaphase, and early anaphase cell division stages and to ki
Synonyms:	HZW10; KNTC1AP
Note:	Immunogen Sequence Homology: Human: 100%; Dog: 93%; Pig: 93%; Rat: 93%; Horse: 93%; Rabbit: 93%; Guinea pig: 93%; Bovine: 86%


[View online »](#)

Protein Families: Druggable Genome

Product images:



WB Suggested Anti-ZW10 Antibody Titration: 0.2-1 ug/ml; Positive Control: PANC1 cell lysate