

Product datasheet for **TA344364**

EVX2 Rabbit Polyclonal Antibody

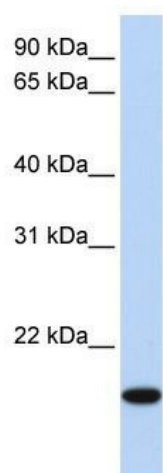
Product data:

Product Type:	Primary Antibodies
Applications:	WB
Recommended Dilution:	WB
Reactivity:	Human
Host:	Rabbit
Isotype:	IgG
Clonality:	Polyclonal
Immunogen:	The immunogen for anti-EVX2 antibody: synthetic peptide directed towards the N terminal of human EVX2. Synthetic peptide located within the following region: TTSASGSGLGSLHGGSGGSAALGGSGSGADQVRRYRTAFTREQIARL
Formulation:	Liquid. Purified antibody supplied in 1x PBS buffer with 0.09% (w/v) sodium azide and 2% sucrose. <i>Note that this product is shipped as lyophilized powder to China customers.</i>
Purification:	Affinity Purified
Conjugation:	Unconjugated
Storage:	Store at -20°C as received.
Stability:	Stable for 12 months from date of receipt.
Predicted Protein Size:	17 kDa
Gene Name:	even-skipped homeobox 2
Database Link:	NP_001073927 Entrez Gene 344191 Human Q03828
Background:	EVX2 belongs to the even-skipped homeobox family. It contains 1 homeobox DNA-binding domain. 117-kb microdeletion removing HOXD9-HOXD13 and EVX2 causes synpolydactyly.
Synonyms:	EVX-2
Note:	Immunogen Sequence Homology: Dog: 100%; Pig: 100%; Rat: 100%; Human: 100%; Mouse: 100%; Guinea pig: 100%; Horse: 93%; Zebrafish: 82%; Bovine: 75%; Rabbit: 75%



[View online »](#)

Product images:



WB Suggested Anti-EVX2 Antibody Titration: 0.2-1 ug/ml; ELISA Titer: 1:1562500; Positive Control: Hela cell lysate