

Product datasheet for **TA344361**

CBX2 Rabbit Polyclonal Antibody

Product data:

Product Type:	Primary Antibodies
Applications:	WB
Recommended Dilution:	WB
Reactivity:	Human
Host:	Rabbit
Isotype:	IgG
Clonality:	Polyclonal
Immunogen:	The immunogen for anti-CBX2 antibody: synthetic peptide directed towards the middle region of human CBX2. Synthetic peptide located within the following region: SDSDPDSASPPSTGQNPSVSVQTSQDWKPTRSLIEHVFVTDVTANLITVT
Formulation:	Liquid. Purified antibody supplied in 1x PBS buffer with 0.09% (w/v) sodium azide and 2% sucrose. <i>Note that this product is shipped as lyophilized powder to China customers.</i>
Purification:	Affinity Purified
Conjugation:	Unconjugated
Storage:	Store at -20°C as received.
Stability:	Stable for 12 months from date of receipt.
Predicted Protein Size:	56 kDa
Gene Name:	chromobox 2
Database Link:	NP_005180 Entrez Gene 84733 Human Q14781
Background:	CBX2 Contains 1 A.T hook DNA-binding domain and 1 chromo domain. CBX2 is a component of the Polycomb group (PcG) multiprotein PRC1 complex, a complex required to maintain the transcriptionally repressive state of many genes, including Hox genes, throughout development. PcG PRC1 complex acts via chromatin remodeling and modification of histones; it mediates monoubiquitination of histone H2A 'Lys-119', rendering chromatin heritably changed in its expressibility.



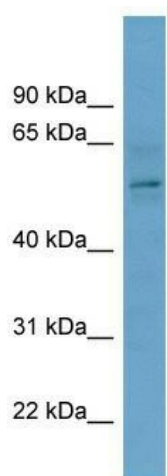
[View online »](#)

Synonyms: CDCA6; M33; SRXY5

Note: Immunogen Sequence Homology: Human: 100%; Horse: 93%; Bovine: 86%; Pig: 79%; Rat: 79%

Protein Families: Transcription Factors

Product images:



WB Suggested Anti-CBX2 Antibody Titration: 0.2-1 ug/ml; Positive Control: OVCAR-3 cell lysate CBX2 is supported by BioGPS gene expression data to be expressed in OVCAR3