

Product datasheet for **TA344360**

EGR1 Rabbit Polyclonal Antibody

Product data:

Product Type:	Primary Antibodies
Applications:	WB
Recommended Dilution:	WB
Reactivity:	Human
Host:	Rabbit
Isotype:	IgG
Clonality:	Polyclonal
Immunogen:	The immunogen for anti-EGR1 antibody: synthetic peptide directed towards the middle region of human EGR1. Synthetic peptide located within the following region: PSPVPTSFSSPGSSTYSPVHSGFPSPSVATTYSSVPPAFPAQVSSFPS
Formulation:	Liquid. Purified antibody supplied in 1x PBS buffer with 0.09% (w/v) sodium azide and 2% sucrose. <i>Note that this product is shipped as lyophilized powder to China customers.</i>
Purification:	Affinity Purified
Conjugation:	Unconjugated
Storage:	Store at -20°C as received.
Stability:	Stable for 12 months from date of receipt.
Predicted Protein Size:	57 kDa
Gene Name:	early growth response 1
Database Link:	NP_001955 Entrez Gene 1958 Human P18146
Background:	Early Growth Response Protein 1 (EGR1, Krox-24 protein, nerve growth factor-induced protein A, Transcription factor ETR103, Zinc finger protein 225) belongs to the EGR family of C2H2-type zinc-finger proteins. It is a nuclear protein and functions as a tr
Synonyms:	AT225; G0S30; KROX-24; NGFI-A; TIS8; ZIF-268; ZNF225
Note:	Immunogen Sequence Homology: Dog: 100%; Pig: 100%; Rat: 100%; Horse: 100%; Human: 100%; Sheep: 100%; Bovine: 100%; Rabbit: 100%; Guinea pig: 100%; Mouse: 93%

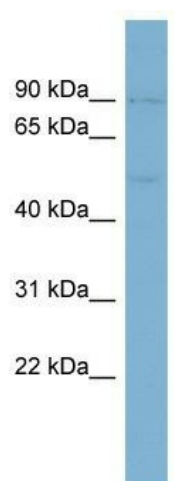


[View online »](#)

Protein Families: Druggable Genome

Protein Pathways: Prion diseases

Product images:



WB Suggested Anti-EGR1 Antibody Titration: 0.2-1 ug/ml; ELISA Titer: 1:1562500; Positive Control: OVCA9-3 cell lysate