

## Product datasheet for **TA344358**

### IGF2BP1 Rabbit Polyclonal Antibody

#### Product data:

|                         |   |
|-------------------------|---|
| Product Type:           | Primary Antibodies  |
| Applications:           | IHC, WB   |
| Recommended Dilution:   | IHC, WB   |
| Reactivity:             | Human, Mouse  |
| Host:                   | Rabbit  |
| Isotype:                | IgG   |
| Clonality:              | Polyclonal  |
| Immunogen:              | The immunogen for anti-IGF2BP1 antibody: synthetic peptide directed towards the N terminal region of human IGF2BP1. Synthetic peptide located within the following region:<br>AFVDCPDEHWAMKAIETFSGKVELQGKRLEIEHSVPPKQRSRKIQIRNIPP |
| Formulation:            | Liquid. Purified antibody supplied in 1x PBS buffer with 0.09% (w/v) sodium azide and 2% sucrose.<br><i>Note that this product is shipped as lyophilized powder to China customers.</i>   |
| Purification:           | Affinity Purified   |
| Conjugation:            | Unconjugated  |
| Storage:                | Store at -20°C as received.   |
| Stability:              | Stable for 12 months from date of receipt.  |
| Predicted Protein Size: | 63 kDa  |
| Gene Name:              | insulin like growth factor 2 mRNA binding protein 1   |
| Database Link:          | <a href="#">NP_006537</a><br><a href="#">Entrez Gene 140486 Mouse</a> <a href="#">Entrez Gene 10642 Human</a><br><a href="#">Q9NZI8</a>   |



[View online »](#)

**Background:**

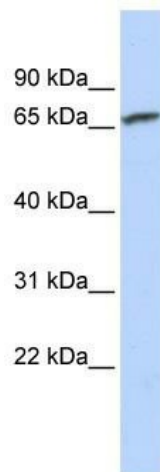
IGF2BP1 is a member of the IGF-II mRNA-binding protein (IMP) family. The protein contains four K homology domains and two RNA recognition motifs. It functions by binding to the 5' UTR of the insulin-like growth factor 2 (IGF2) mRNA and regulating IGF2 translation. This gene encodes a member of the IGF-II mRNA-binding protein (IMP) family. The protein encoded by this gene contains four K homology domains and two RNA recognition motifs. It functions by binding to the 5' UTR of the insulin-like growth factor 2 (IGF2) mRNA and regulating IGF2 translation. This gene encodes a member of the IGF-II mRNA-binding protein (IMP) family. The protein encoded by this gene contains four K homology domains and two RNA recognition motifs. It functions by binding to the 5' UTR of the insulin-like growth factor 2 (IGF2) mRNA and regulating IGF2 translation. Publication Note: This RefSeq record includes a subset of the publications that are available for this gene. Please see the Entrez Gene record to access additional publications.

**Synonyms:**

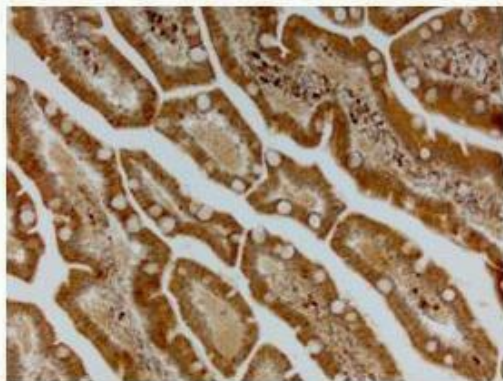
CRD-BP; CRDBP; IMP-1; IMP1; VICKZ1; ZBP1

**Note:**

Immunogen Sequence Homology: Dog: 100%; Pig: 100%; Rat: 100%; Horse: 100%; Human: 100%; Mouse: 100%; Sheep: 100%; Bovine: 100%; Rabbit: 100%; Guinea pig: 100%; Zebrafish: 86%

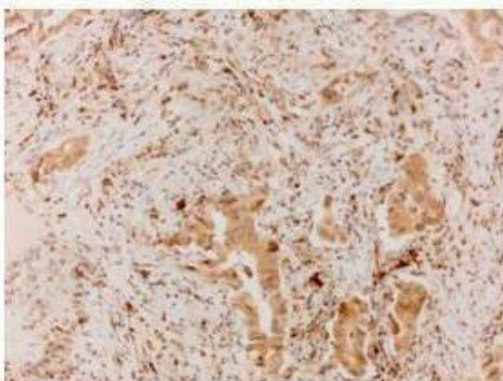
**Product images:**

WB Suggested Anti-IGF2BP1 Antibody Titration:  
0.2-1 ug/ml; ELISA Titer: 1:312500; Positive  
Control: Jurkat cell lysate

**IGFBP1**


Brown: IGF2BP1 Blue: Nuclei

Researcher: Haodong Xu. Department of Pathology, University of Rochester medical Center; Application: IHC; Species+tissue/cell type: Human small intestine; Primary antibody dilution: 1:300; Secondary antibody: Anti-rabbit-linker, Fbex-HRP

**IGFBP1**


Brown: IGF2BP1 Blue: Nuclei

Sample Type : Human lung carcinoma Primary Antibody Dilution : 1:300 Secondary Antibody : Anti-rabbit-linker, Fbex-HRP Secondary Antibody Dilution : NOT FOUND Color/Signal Descriptions : Brown: IGF2BP1 Blue: Nuclei Gene Name : IGF2BP1 Submitted by : Haodong Xu.