

Product datasheet for **TA344350**

ALDH1B1 Rabbit Polyclonal Antibody

Product data:

Product Type:	Primary Antibodies
Applications:	WB
Recommended Dilution:	WB
Reactivity:	Human
Host:	Rabbit
Isotype:	IgG
Clonality:	Polyclonal
Immunogen:	The immunogen for anti-ALDH1B1 antibody: synthetic peptide directed towards the middle region of human ALDH1B1. Synthetic peptide located within the following region: GFFIKPTVFGGVQDDMRIAKEEIFGVPVQPLFKFKKIEEVERANNTYGL
Formulation:	Liquid. Purified antibody supplied in 1x PBS buffer with 0.09% (w/v) sodium azide and 2% sucrose. <i>Note that this product is shipped as lyophilized powder to China customers.</i>
Purification:	Affinity Purified
Conjugation:	Unconjugated
Storage:	Store at -20°C as received.
Stability:	Stable for 12 months from date of receipt.
Predicted Protein Size:	57 kDa
Gene Name:	aldehyde dehydrogenase 1 family member B1
Database Link:	NP_000683 Entrez Gene 219 Human P30837



[View online »](#)

Background: ALDH1B1 belongs to the aldehyde dehydrogenases family of proteins. Aldehyde dehydrogenase is the second enzyme of the major oxidative pathway of alcohol metabolism. This gene does not contain introns in the coding sequence. The variation of this locus may affect the development of alcohol-related problems. This protein belongs to the aldehyde dehydrogenases family of proteins. Aldehyde dehydrogenase is the second enzyme of the major oxidative pathway of alcohol metabolism. This gene does not contain introns in the coding sequence. The variation of this locus may affect the development of alcohol-related problems.

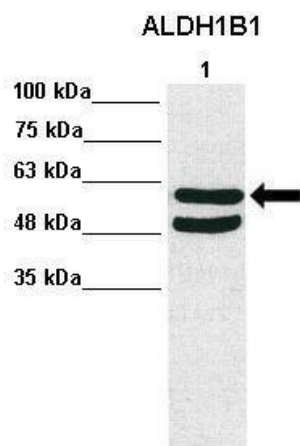
Synonyms: ALDH5; ALDHX

Note: Immunogen Sequence Homology: Human: 100%; Dog: 93%; Rat: 91%; Pig: 86%; Mouse: 86%; Bovine: 86%; Zebrafish: 85%; Guinea pig: 85%; Horse: 79%

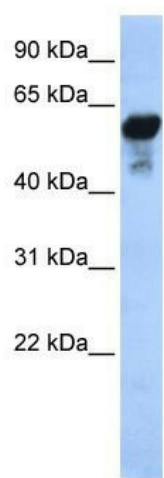
Protein Families: Druggable Genome

Protein Pathways: Arginine and proline metabolism, Ascorbate and aldarate metabolism, beta-Alanine metabolism, Butanoate metabolism, Fatty acid metabolism, Glycerolipid metabolism, Glycolysis / Gluconeogenesis, Histidine metabolism, Limonene and pinene degradation, Lysine degradation, Metabolic pathways, Propanoate metabolism, Pyruvate metabolism, Tryptophan metabolism, Valine, leucine and isoleucine degradation

Product images:



WB Suggested Anti-ALDH1B1 Antibody ; Positive Control: Lane 1: 30ug human hepatocytes; Primary Antibody Dilution : 1:1000; Secondary Antibody : Anti-rabbit-HRP; Secondary Antibody Dilution : 1:5000; Submitted by: Takeshi Saito, USC Keck School of Medicine



WB Suggested Anti-ALDH1B1 Antibody Titration:
0.2-1 ug/ml; ELISA Titer: 1:312500; Positive
Control: HeLa cell lysate ALDH1B1 is supported by
BioGPS gene expression data to be expressed in
HeLa