

Product datasheet for **TA344347**

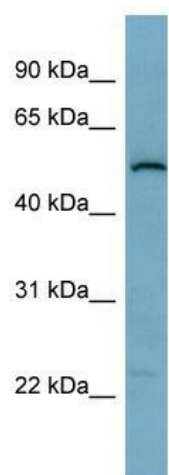
SNAP47 Rabbit Polyclonal Antibody

Product data:

| | |
|-------------------------|--|
| Product Type: | Primary Antibodies |
| Applications: | WB |
| Recommended Dilution: | WB |
| Reactivity: | Human |
| Host: | Rabbit |
| Isotype: | IgG |
| Clonality: | Polyclonal |
| Immunogen: | The immunogen for anti-C1orf142 antibody: synthetic peptide directed towards the middle region of human C1orf142. Synthetic peptide located within the following region: TALHLQTSLPALSEADTQELTQILRRMKGLALEAESELERQDEALDGVAA |
| Formulation: | Liquid. Purified antibody supplied in 1x PBS buffer with 0.09% (w/v) sodium azide and 2% sucrose. <i>Note that this product is shipped as lyophilized powder to China customers.</i> |
| Purification: | Affinity Purified |
| Conjugation: | Unconjugated |
| Storage: | Store at -20°C as received. |
| Stability: | Stable for 12 months from date of receipt. |
| Predicted Protein Size: | 51 kDa |
| Gene Name: | synaptosome associated protein 47kDa |
| Database Link: | NP_444280 Entrez Gene 116841 Human Q5SQN1 |
| Background: | The function of this protein remains unknown. |
| Synonyms: | C1orf142; ESFI5812; HEL-S-290; HEL170; SNAP-47; SVAP1 |
| Note: | Immunogen Sequence Homology: Human: 100%; Pig: 92%; Zebrafish: 92%; Horse: 86%; Bovine: 86%; Rabbit: 86%; Rat: 79%; Mouse: 79%; Yeast: 75% |
| Protein Pathways: | SNARE interactions in vesicular transport |



[View online »](#)

Product images:

WB Suggested Anti-C1orf142 Antibody Titration:
0.2-1 ug/ml; ELISA Titer: 1:12500; Positive Control:
PANC1 cell lysate