

Product datasheet for **TA344345**

CAPNS1 Rabbit Polyclonal Antibody

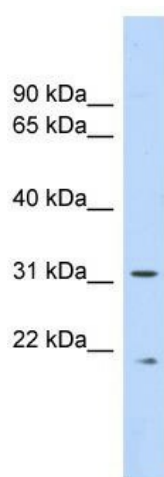
Product data:

Product Type:	Primary Antibodies
Applications:	WB
Recommended Dilution:	WB
Reactivity:	Human
Host:	Rabbit
Isotype:	IgG
Clonality:	Polyclonal
Immunogen:	The immunogen for anti-CAPNS1 antibody: synthetic peptide directed towards the middle region of human CAPNS1. Synthetic peptide located within the following region: RRYDSESGNMDFDNFISCLVRLDAMFRAFKSLDKDGTGQIQVNIQEWLQL
Formulation:	Liquid. Purified antibody supplied in 1x PBS buffer with 0.09% (w/v) sodium azide and 2% sucrose. <i>Note that this product is shipped as lyophilized powder to China customers.</i>
Purification:	Affinity Purified
Conjugation:	Unconjugated
Storage:	Store at -20°C as received.
Stability:	Stable for 12 months from date of receipt.
Predicted Protein Size:	29 kDa
Gene Name:	calpain small subunit 1
Database Link:	NP_001003962 Entrez Gene 826 Human P04632



[View online »](#)

- Background:** Calpains are a ubiquitous, well-conserved family of calcium-dependent, cysteine proteases. Calpain families have been implicated in neurodegenerative processes, as their activation can be triggered by calcium influx and oxidative stress. Calpain I and II are heterodimeric with distinct large subunits associated with common small subunits, all of which are encoded by different genes. This gene encodes a small subunit common to both calpain I and II and is associated with myotonic dystrophy. Two transcript variants encoding the same protein have been identified for this gene.
- Synonyms:** CALPAIN4; CANP; CANPS; CAPN4; CDPS; CSS1
- Note:** Immunogen Sequence Homology: Pig: 100%; Rat: 100%; Human: 100%; Sheep: 100%; Bovine: 100%; Rabbit: 100%; Dog: 93%; Horse: 93%; Mouse: 93%; Guinea pig: 93%
- Protein Families:** Druggable Genome, Protease

Product images:

WB Suggested Anti-CAPNS1 Antibody Titration:
0.2-1 ug/ml; ELISA Titer: 1:62500; Positive Control:
Human Lung