

Product datasheet for **TA344343**

CAPZB Rabbit Polyclonal Antibody

Product data:

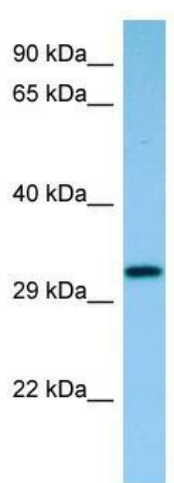
Product Type:	Primary Antibodies
Applications:	WB
Recommended Dilution:	WB
Reactivity:	Rat
Host:	Rabbit
Isotype:	IgG
Clonality:	Polyclonal
Immunogen:	The immunogen for Anti-Capzb antibody is: synthetic peptide directed towards the C-terminal region of Rat Capzb. Synthetic peptide located within the following region: VEDMENKIRSTLNEIYFGKTKDIVNGLRSVQTFADKSKQEALKNDLVEAL
Formulation:	Liquid. Purified antibody supplied in 1x PBS buffer with 0.09% (w/v) sodium azide and 2% sucrose. <i>Note that this product is shipped as lyophilized powder to China customers.</i>
Purification:	Affinity Purified
Conjugation:	Unconjugated
Storage:	Store at -20°C as received.
Stability:	Stable for 12 months from date of receipt.
Predicted Protein Size:	29 kDa
Gene Name:	capping actin protein of muscle Z-line beta subunit
Database Link:	NP_004921 Entrez Gene 298584 Rat P47756
Background:	F-actin-capping proteins bind in a Ca ²⁺ -independent manner to the fast growing ends of actin filaments (barbed end) thereby blocking the exchange of subunits at these ends. Unlike other capping proteins (such as gelsolin and severin), these proteins do not sever actin filaments. Plays a role in the regulation of cell morphology and cytoskeletal organization.
Synonyms:	CAPB; CAPPB; CAPZ



[View online »](#)

Note: Immunogen Sequence Homology: Dog: 100%; Pig: 100%; Rat: 100%; Horse: 100%; Human: 100%; Mouse: 100%; Bovine: 100%; Rabbit: 100%; Guinea pig: 100%; Zebrafish: 86%

Product images:



WB Suggested Anti-Capzb Antibody; Titration: 1.0 ug/ml; Positive Control: Rat Small Intestine