

## Product datasheet for **TA344342**

### SNAP47 Rabbit Polyclonal Antibody

#### Product data:

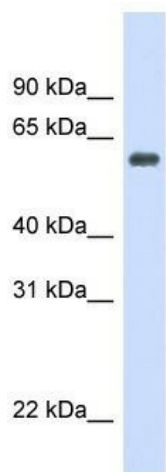
Product Type:	Primary Antibodies
Applications:	IHC, WB
Recommended Dilution:	WB, IHC
Reactivity:	Human, Mouse
Host:	Rabbit
Isotype:	IgG
Clonality:	Polyclonal
Immunogen:	The immunogen for anti-CAT antibody: synthetic peptide directed towards the middle region of human CAT. Synthetic peptide located within the following region: LKDAQIFIQKKAVKNFTEVHPDYGSHIQALLDKYNAEKPKNAIHTFVQSG
Formulation:	Liquid. Purified antibody supplied in 1x PBS buffer with 0.09% (w/v) sodium azide and 2% sucrose. <i>Note that this product is shipped as lyophilized powder to China customers.</i>
Purification:	Affinity Purified
Conjugation:	Unconjugated
Storage:	Store at -20°C as received.
Stability:	Stable for 12 months from date of receipt.
Predicted Protein Size:	58 kDa
Gene Name:	synaptosome associated protein 47kDa
Database Link:	<a href="#">NP_444280</a> <a href="#">Entrez Gene 116841 Human</a> <a href="#">Q5SQN1</a>
Background:	This gene encodes catalase, a key antioxidant enzyme in the bodies defense against oxidative stress. Catalase is a heme enzyme that is present in the peroxisome of nearly all aerobic cells. Catalase converts the reactive oxygen species hydrogen peroxide t
Synonyms:	C1orf142; ESFI5812; HEL-S-290; HEL170; SNAP-47; SVAP1
Note:	Immunogen Sequence Homology: Dog: 100%; Pig: 100%; Horse: 100%; Human: 100%; Mouse: 100%; Rabbit: 100%; Rat: 93%; Goat: 93%; Sheep: 93%; Bovine: 93%; Guinea pig: 86%



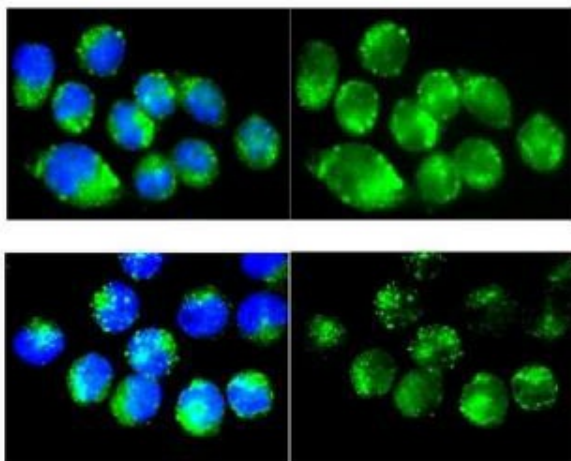
[View online »](#)

Protein Pathways: SNARE interactions in vesicular transport

Product images:



WB Suggested Anti-CAT Antibody Titration: 0.2-1 ug/ml; ELISA Titer: 1:12500; Positive Control: Human heart



Sample Type: Mouse Macrophage; Dilution: 1:100