

## Product datasheet for **TA344340**

### Ccnb1ip1 Rabbit Polyclonal Antibody

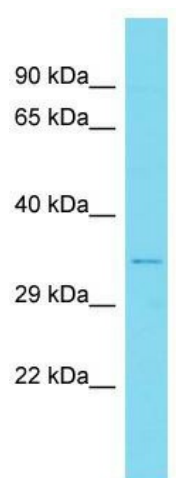
#### Product data:

Product Type:	Primary Antibodies
Applications:	WB
Recommended Dilution:	WB
Reactivity:	Mouse
Host:	Rabbit
Isotype:	IgG
Clonality:	Polyclonal
Immunogen:	The immunogen for Anti-Ccnb1ip1 antibody is synthetic peptide directed towards the N-terminal region of Mouse Ccnb1ip1. Synthetic peptide located within the following region: CEDMLLCNYRKRIKLSGYAWVTACSHIFCDQHGSGEFSRSPAICPACNS
Formulation:	Liquid. Purified antibody supplied in 1x PBS buffer with 0.09% (w/v) sodium azide and 2% sucrose. <i>Note that this product is shipped as lyophilized powder to China customers.</i>
Purification:	Affinity Purified
Conjugation:	Unconjugated
Storage:	Store at -20°C as received.
Stability:	Stable for 12 months from date of receipt.
Predicted Protein Size:	31 kDa
Gene Name:	cyclin B1 interacting protein 1
Database Link:	<a href="#">NP_001104589</a> <a href="#">Entrez Gene 239083 Mouse</a> <a href="#">D3Z3K2</a>
Background:	The function of this protein remains unknown.
Synonyms:	C14orf18; HEI10; OTTHUMP00000163984; OTTHUMP00000163986
Note:	Immunogen Sequence Homology: Dog: 100%; Pig: 100%; Rat: 100%; Horse: 100%; Human: 100%; Mouse: 100%; Bovine: 100%; Rabbit: 100%; Guinea pig: 100%



[View online »](#)

## Product images:



Host: Rabbit; Target Name: Ccnb1ip1; Sample  
Tissue: Mouse Thymus lysates; Antibody Dilution:  
1.0 ug/ml