

Product datasheet for **TA344338**

Carboxypeptidase H (CPE) Rabbit Polyclonal Antibody

Product data:

Product Type:	Primary Antibodies
Applications:	IHC, WB
Recommended Dilution:	WB, IHC
Reactivity:	Human
Host:	Rabbit
Isotype:	IgG
Clonality:	Polyclonal
Immunogen:	The immunogen for anti-CPE antibody: synthetic peptide directed towards the N terminal of human CPE. Synthetic peptide located within the following region: GMRRRRRLQQEDGISFEYHRYPELREALVSVWLQCTAISRIYTVGRSFEQ
Formulation:	Liquid. Purified antibody supplied in 1x PBS buffer with 0.09% (w/v) sodium azide and 2% sucrose. <i>Note that this product is shipped as lyophilized powder to China customers.</i>
Purification:	Affinity Purified
Conjugation:	Unconjugated
Storage:	Store at -20°C as received.
Stability:	Stable for 12 months from date of receipt.
Predicted Protein Size:	52 kDa
Gene Name:	carboxypeptidase E
Database Link:	NP_001864 Entrez Gene 1363 Human P16870



[View online »](#)

Background: CPE is a carboxypeptidase that cleaves C-terminal amino acid residues and is involved in the biosynthesis of peptide hormones and neurotransmitters, including insulin. It is a peripheral membrane protein. The protein specifically binds regulated secretory pathway proteins, including prohormones, but not constitutively secreted proteins. This gene encodes a carboxypeptidase that cleaves C-terminal amino acid residues and is involved in the biosynthesis of peptide hormones and neurotransmitters, including insulin. It is a peripheral membrane protein. The protein specifically binds regulated secretory pathway proteins, including prohormones, but not constitutively secreted proteins. Mutations in this gene are implicated in type II diabetes. Publication Note: This RefSeq record includes a subset of the publications that are available for this gene. Please see the Entrez Gene record to access additional publications.

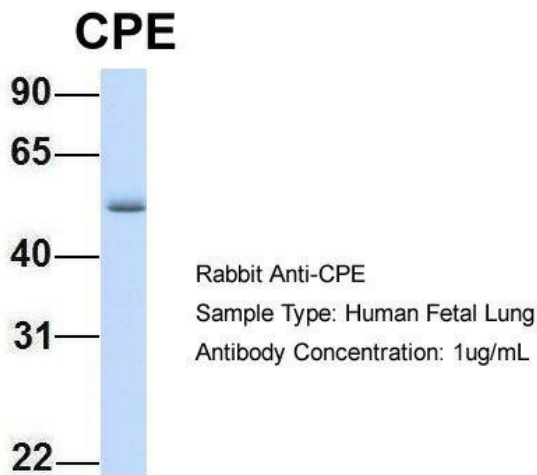
Synonyms: CPH

Note: Immunogen Sequence Homology: Pig: 100%; Rat: 100%; Human: 100%; Mouse: 100%; Bovine: 100%; Rabbit: 100%; Guinea pig: 100%; Zebrafish: 85%

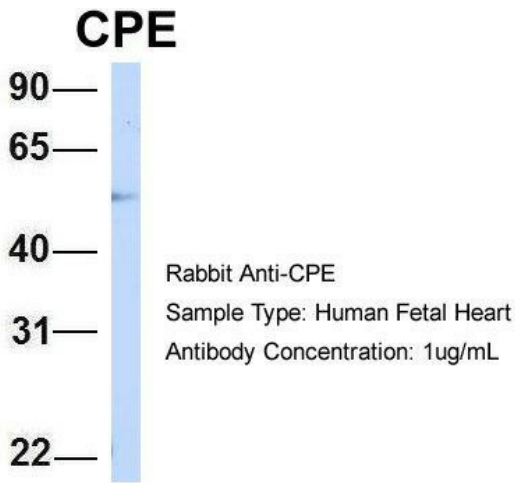
Protein Families: Druggable Genome, Protease, Secreted Protein

Protein Pathways: Type I diabetes mellitus

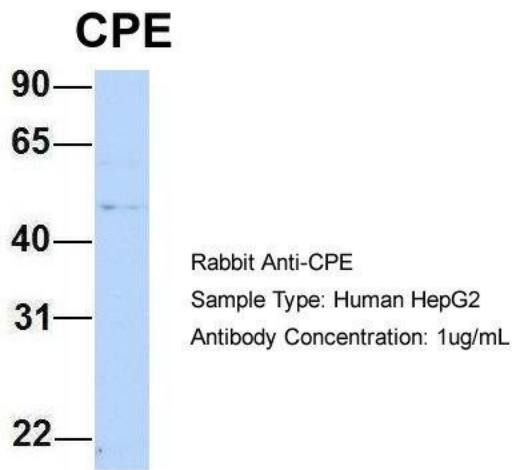
Product images:



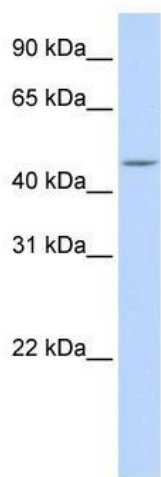
Host: Rabbit; Target Name: CPE; Sample Tissue: Human Fetal Lung; Antibody Dilution: 1.0 ug/ml



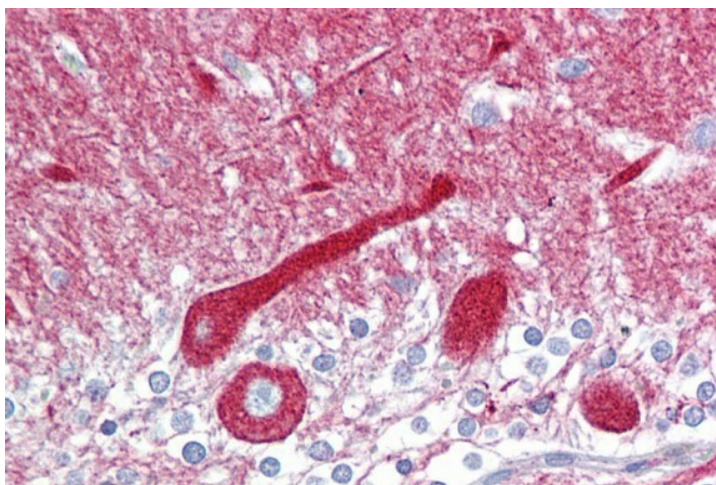
Host: Rabbit; Target Name: CPE; Sample Tissue: Human Fetal Heart; Antibody Dilution: 1.0 ug/ml



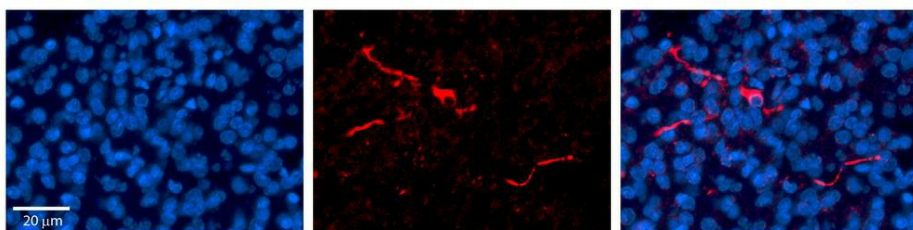
Host: Rabbit; Target Name: CPE; Sample Tissue: HepG2; Antibody Dilution: 1.0 ug/ml; CPE is strongly supported by BioGPS gene expression data to be expressed in Human HepG2 cells



WB Suggested Anti-CPE Antibody Titration: 0.2-1 ug/ml; ELISA Titer: 1:312500; Positive Control: MCF7 cell lysate CPE is supported by BioGPS gene expression data to be expressed in MCF7



Immunohistochemistry with Brain, cerebellum tissue at an antibody concentration of 5 ug/ml using anti-CPE antibody



Rabbit Anti-CPE Antibody; Formalin Fixed Paraffin Embedded Tissue: Human Pineal Tissue; Observed Staining: Cytoplasmic in cell bodies and processes of pinealocytes; Primary Antibody Concentration: 1:100; Other Working Concentrations: 1/600; Secondary Anti