

## Product datasheet for **TA344335**

### Lipoamide Dehydrogenase (DLD) Rabbit Polyclonal Antibody

#### Product data:

Product Type:	Primary Antibodies
Applications:	IHC, WB
Recommended Dilution:	WB
Reactivity:	Human, Rat
Host:	Rabbit
Isotype:	IgG
Clonality:	Polyclonal
Immunogen:	The immunogen for anti-DLD antibody: synthetic peptide directed towards the middle region of human DLD. Synthetic peptide located within the following region: AGEMVNEAALALEYGASCEDIARVCHAHPTLSEAFREANLAASFGKSINF
Formulation:	Liquid. Purified antibody supplied in 1x PBS buffer with 0.09% (w/v) sodium azide and 2% sucrose. <i>Note that this product is shipped as lyophilized powder to China customers.</i>
Purification:	Affinity Purified
Conjugation:	Unconjugated
Storage:	Store at -20°C as received.
Stability:	Stable for 12 months from date of receipt.
Predicted Protein Size:	56 kDa
Gene Name:	dihydrolipoamide dehydrogenase
Database Link:	<a href="#">NP_000099</a> <a href="#">Entrez Gene 298942 Rat</a> <a href="#">Entrez Gene 1738 Human</a> <a href="#">P09622</a>



[View online »](#)

**Background:**

DLD is the L protein of the mitochondrial glycine cleavage system. The L protein, also named dihydrolipoamide dehydrogenase, is also a component of the pyruvate dehydrogenase complex, the alpha-ketoglutarate dehydrogenase complex, and the branched-chain alpha-keto acid dehydrogenase complex. Mutations in this gene have been identified in patients with E3-deficient maple syrup urine disease and lipoamide dehydrogenase deficiency. This gene encodes the L protein of the mitochondrial glycine cleavage system. The L protein, also named dihydrolipoamide dehydrogenase, is also a component of the pyruvate dehydrogenase complex, the alpha-ketoglutarate dehydrogenase complex, and the branched-chain alpha-keto acid dehydrogenase complex. Mutations in this gene have been identified in patients with E3-deficient maple syrup urine disease and lipoamide dehydrogenase deficiency. Publication Note: This RefSeq record includes a subset of the publications that are available for this gene. Please see the Entrez Gene record to access additional publications.

**Synonyms:**

DLDD; DLDH; E3; GCSL; LAD; PHE3

**Note:**

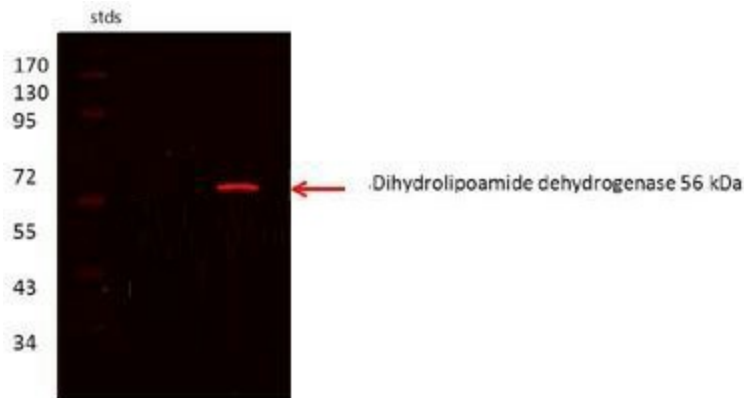
Immunogen Sequence Homology: Dog: 100%; Horse: 100%; Human: 100%; Bovine: 100%; Rabbit: 100%; Pig: 93%; Rat: 93%; Zebrafish: 93%; Guinea pig: 93%; Mouse: 86%; Yeast: 86%

**Protein Families:**

Druggable Genome

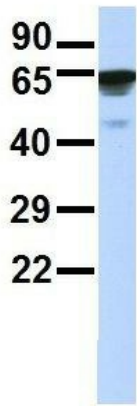
**Protein Pathways:**

Citrate cycle (TCA cycle), Glycine, serine and threonine metabolism, Glycolysis / Gluconeogenesis, Metabolic pathways, Pyruvate metabolism, Valine, leucine and isoleucine degradation

**Product images:**


DLD antibody - middle region validated by WB using Proximal kidney tubules purified from cortex at 1:1000.

### DLD



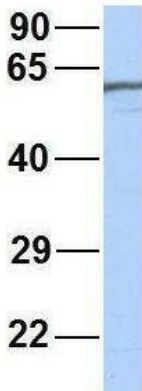
Rabbit Anti-DLD  
 Sample Type: Human Adult Placenta  
 Antibody Concentration: 1ug/mL

2Hum. Adult Placenta; Host: Rabbit; Target Name: SERPINA3; Sample Tissue: Human Adult Placenta; Antibody Dilution: 1.0 ug/ml



WB Suggested Anti-DLD Antibody Titration: 0.2-1 ug/ml; ELISA Titer: 1:62500; Positive Control: Jurkat cell lysate DLD is supported by BioGPS gene expression data to be expressed in Jurkat

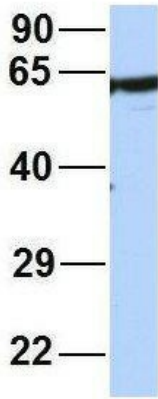
### DLD



Rabbit Anti-DLD  
 Sample Type: Human MCF7  
 Antibody Concentration: 1ug/mL

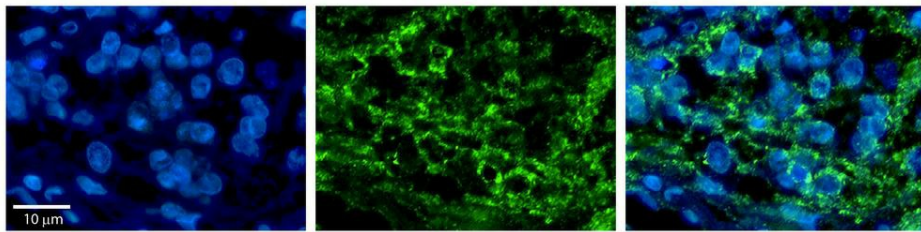
4Human MCF7; Host: Rabbit; Target Name: NOP56; Sample Tissue: MCF7; Antibody Dilution: 1.0 ug/ml; DLD is supported by BioGPS gene expression data to be expressed in MCF7

## DLD



Rabbit Anti-DLD  
 Sample Type: Human HeLa  
 Antibody Concentration: 1ug/mL

5Human HeLa; Host: Rabbit; Target Name: EGFL8;  
 Sample Tissue: HeLa; Antibody Dilution: 1.0 ug/ml;  
 DLD is supported by BioGPS gene expression  
 data to be expressed in HeLa



Rabbit Anti-DLD Antibody; Formalin Fixed  
 Paraffin Embedded Tissue: Human Pineal Tissue;  
 Observed Staining: Cytoplasmic in cell bodies and  
 processes of pinealocytes; Primary Antibody  
 Concentration: 1:100; Secondary Antibody:  
 Donkey anti-Rabbit-Cy3; Seconda