

Product datasheet for **TA344334**

DUSP22 Rabbit Polyclonal Antibody

Product data:

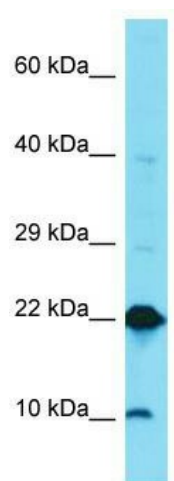
Product Type:	Primary Antibodies
Applications:	WB
Recommended Dilution:	WB
Reactivity:	Human
Host:	Rabbit
Isotype:	IgG
Clonality:	Polyclonal
Immunogen:	The immunogen for Anti-DUSP22 antibody is: synthetic peptide directed towards the N-terminal region of Human DUSP22. Synthetic peptide located within the following region: LPGLYIGNFKDARDAEQLSKNKVTHILSVHDSARPMLEGVKYLCPAADS
Formulation:	Liquid. Purified antibody supplied in 1x PBS buffer with 0.09% (w/v) sodium azide and 2% sucrose. <i>Note that this product is shipped as lyophilized powder to China customers.</i>
Purification:	Affinity Purified
Conjugation:	Unconjugated
Storage:	Store at -20°C as received.
Stability:	Stable for 12 months from date of receipt.
Predicted Protein Size:	20 kDa
Gene Name:	dual specificity phosphatase 22
Database Link:	NP_064570 Entrez Gene 56940 Human Q9NRW4
Background:	DUSP22 activates the Jnk signaling pathway. It dephosphorylates and deactivates p38 and stress-activated protein kinase/c-Jun N-terminal kinase (SAPK/JNK).
Synonyms:	JKAP; JSP-1; JSP1; LMW-DSP2; LMWDSP2; MKP-x; MKPX; VHX
Note:	Immunogen Sequence Homology: Dog: 100%; Horse: 100%; Human: 100%; Bovine: 100%; Rabbit: 100%; Rat: 93%; Mouse: 93%; Pig: 91%; Guinea pig: 91%; Zebrafish: 79%



[View online »](#)

Protein Families: Druggable Genome, Phosphatase

Product images:



Host: Rabbit; Target Name: DUSP22; Sample Tissue: Thyroid Tumor lysates; Antibody Dilution: 1.0 ug/ml