

Product datasheet for **TA344331**

SPFH2 (ERLIN2) Rabbit Polyclonal Antibody

Product data:

Product Type:	Primary Antibodies
Applications:	WB
Recommended Dilution:	WB
Reactivity:	Human
Host:	Rabbit
Isotype:	IgG
Clonality:	Polyclonal
Immunogen:	The immunogen for anti-ERLIN2 antibody: synthetic peptide directed towards the middle region of human ERLIN2. Synthetic peptide located within the following region: ASNSKIYFGKDIPNMFMSAGSVSKQFEGADKLSFGLEDEPLETATKEN
Formulation:	Liquid. Purified antibody supplied in 1x PBS buffer with 0.09% (w/v) sodium azide and 2% sucrose. <i>Note that this product is shipped as lyophilized powder to China customers.</i>
Purification:	Affinity Purified
Conjugation:	Unconjugated
Storage:	Store at -20°C as received.
Stability:	Stable for 12 months from date of receipt.
Predicted Protein Size:	38 kDa
Gene Name:	ER lipid raft associated 2
Database Link:	NP_009106 Entrez Gene 11160 Human O94905
Background:	ERLIN2 plays an important role in the early steps of the endoplasmic reticulum-associated degradation (ERAD) pathway. It is involved in ITPR1 degradation by the ERAD pathway.
Synonyms:	C8orf2; Erlin-2; NET32; SPFH2; SPG18
Note:	Immunogen Sequence Homology: Human: 100%; Rabbit: 100%; Rat: 93%; Mouse: 86%; Pig: 79%

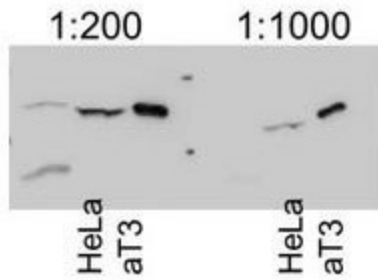


[View online »](#)

Product images:

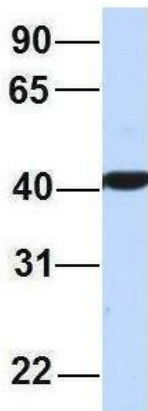


WB Suggested Anti-ERLIN2 Antibody Titration: 0.2-1 ug/ml; ELISA Titer: 1:62500; Positive Control: 293T cell lysate.ERLIN2 is strongly supported by BioGPS gene expression data to be expressed in HEK293T



ERLIN2 antibody - middle region validated by WB using HeLa, aT3 cells at 1:200 / 1:1000.

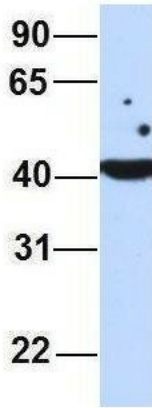
ERLIN2



Rabbit Anti-ERLIN2
 Sample Type: Human Adult Placenta
 Antibody Concentration: 1ug/mL

Host: Rabbit; Target Name: ERLIN2; Sample Tissue: Human Adult Placenta; Antibody Dilution: 1.0 ug/ml

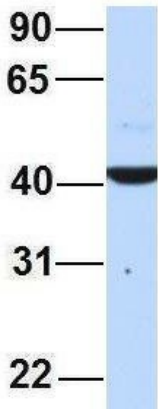
ERLIN2



Rabbit Anti-ERLIN2
Sample Type: Human Fetal Lung
Antibody Concentration: 1ug/mL

Host: Rabbit; Target Name: ERLIN2; Sample
Tissue: Human Fetal Lung; Antibody Dilution: 1.0
ug/ml

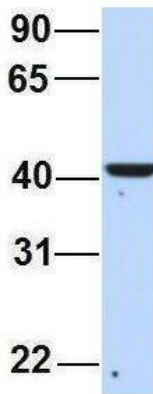
ERLIN2



Rabbit Anti-ERLIN2
Sample Type: Human Fetal Heart
Antibody Concentration: 1ug/mL

Host: Rabbit; Target Name: ERLIN2; Sample
Tissue: Human Fetal Heart; Antibody Dilution: 1.0
ug/ml

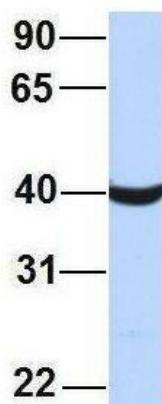
ERLIN2



Rabbit Anti-ERLIN2
Sample Type: Human Fetal Brain
Antibody Concentration: 1ug/mL

Host: Rabbit; Target Name: ERLIN2; Sample
Tissue: Human Fetal Brain; Antibody Dilution: 1.0
ug/ml

ERLIN2



Rabbit Anti-ERLIN2
Sample Type: Human 721_B
Antibody Concentration: 1ug/mL

Host: Rabbit; Target Name: ERLIN2; Sample Tissue: 721_B; Antibody Dilution: 1.0 ug/ml; ERLIN2 is strongly supported by BioGPS gene expression data to be expressed in Human 721_B cells