

Product datasheet for **TA344329**

FKBP2 Rabbit Polyclonal Antibody

Product data:

Product Type:	Primary Antibodies
Applications:	WB
Recommended Dilution:	WB
Reactivity:	Human
Host:	Rabbit
Isotype:	IgG
Clonality:	Polyclonal
Immunogen:	The immunogen for anti-FKBP2 antibody: synthetic peptide directed towards the N terminal of human FKBP2. Synthetic peptide located within the following region: RLSWFRVLTVLSICLSAVATATGAEGKRKLQIGVKKRVDHCPIKSRKGDV
Formulation:	Liquid. Purified antibody supplied in 1x PBS buffer with 0.09% (w/v) sodium azide and 2% sucrose. <i>Note that this product is shipped as lyophilized powder to China customers.</i>
Purification:	Affinity Purified
Conjugation:	Unconjugated
Storage:	Store at -20°C as received.
Stability:	Stable for 12 months from date of receipt.
Predicted Protein Size:	16 kDa
Gene Name:	FK506 binding protein 2
Database Link:	NP_004461 Entrez Gene 2286 Human P26885



[View online »](#)

Background:

FKBP2 is a member of the immunophilin protein family, which play a role in immunoregulation and basic cellular processes involving protein folding and trafficking. This protein is a cis-trans prolyl isomerase that binds the immunosuppressants FK506 and rapamycin. It is thought to function as an ER chaperone and may also act as a component of membrane cytoskeletal scaffolds. Multiple alternatively spliced variants, encoding the same protein, have been identified. The protein encoded by this gene is a member of the immunophilin protein family, which play a role in immunoregulation and basic cellular processes involving protein folding and trafficking. This encoded protein is a cis-trans prolyl isomerase that binds the immunosuppressants FK506 and rapamycin. It is thought to function as an ER chaperone and may also act as a component of membrane cytoskeletal scaffolds. This gene has two alternatively spliced transcript variants that encode the same isoform. Multiple polyadenylation sites have been described for this gene, but the full length nature of this gene has not been determined.

Synonyms:

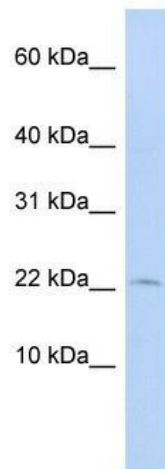
FKBP-13; PPIase

Note:

Immunogen Sequence Homology: Dog: 100%; Pig: 100%; Rat: 100%; Goat: 100%; Horse: 100%; Human: 100%; Mouse: 100%; Bovine: 100%; Guinea pig: 100%; Zebrafish: 79%

Protein Families:

Druggable Genome

Product images:

WB Suggested Anti-FKBP2 Antibody Titration: 0.2-1 ug/ml; ELISA Titer: 1:312500; Positive Control: 721_B cell lysate FKBP2 is supported by BioGPS gene expression data to be expressed in 721_B