

Product datasheet for TA344325

Gigaxonin (GAN) Rabbit Polyclonal Antibody

Product data:

Product Type:	Primary Antibodies
Applications:	WB
Recommended Dilution:	WB
Reactivity:	Human
Host:	Rabbit
Isotype:	IgG
Clonality:	Polyclonal
Immunogen:	The immunogen for anti-GAN antibody: synthetic peptide directed towards the middle region of human GAN. Synthetic peptide located within the following region: YLNDQNLCPASSSFVYGAVPIGASIYVIGDLDTGTNYDYVREFKRSTG
Formulation:	Liquid. Purified antibody supplied in 1x PBS buffer with 0.09% (w/v) sodium azide and 2% sucrose. <i>Note that this product is shipped as lyophilized powder to China customers.</i>
Purification:	Affinity Purified
Conjugation:	Unconjugated
Storage:	Store at -20°C as received.
Stability:	Stable for 12 months from date of receipt.
Predicted Protein Size:	66 kDa
Gene Name:	gigaxonin
Database Link:	NP_071324 Entrez Gene 8139 Human Q9H2C0
Background:	This gene encodes a member of the cytoskeletal BTB/kelch (Broad-Complex, Tramtrack and Bric a brac) repeat family. The encoded protein plays a role in neurofilament architecture and is involved in mediating the ubiquitination and degradation of some proteins. Defects in this gene are a cause of giant axonal neuropathy (GAN).
Synonyms:	GAN1; KLHL16

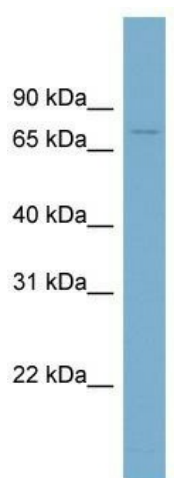


[View online »](#)

Note: Immunogen Sequence Homology: Dog: 100%; Pig: 100%; Rat: 100%; Horse: 100%; Human: 100%; Mouse: 100%; Bovine: 100%; Rabbit: 100%; Guinea pig: 100%

Protein Families: Druggable Genome

Product images:



WB Suggested Anti-GAN Antibody Titration: 0.2-1 ug/ml; ELISA Titer: 1:62500; Positive Control: THP-1 cell lysate