

Product datasheet for **TA344320**

IVD Rabbit Polyclonal Antibody

Product data:

Product Type:	Primary Antibodies
Applications:	WB
Recommended Dilution:	WB
Reactivity:	Human
Host:	Rabbit
Isotype:	IgG
Clonality:	Polyclonal
Immunogen:	The immunogen for Anti-IVD antibody is: synthetic peptide directed towards the N-terminal region of Human IVD. Synthetic peptide located within the following region: APKAQEIDRSNEFKNLREFWKQLGNLGVLGITAPVQYGGSGGLGYLEHVLV
Formulation:	Liquid. Purified antibody supplied in 1x PBS buffer with 0.09% (w/v) sodium azide and 2% sucrose. <i>Note that this product is shipped as lyophilized powder to China customers.</i>
Purification:	Affinity Purified
Conjugation:	Unconjugated
Storage:	Store at -20°C as received.
Stability:	Stable for 12 months from date of receipt.
Predicted Protein Size:	46 kDa
Gene Name:	isovaleryl-CoA dehydrogenase
Database Link:	NP_002216 Entrez Gene 3712 Human P26440
Background:	Isovaleryl-CoA dehydrogenase (IVD) is a mitochondrial matrix enzyme that catalyzes the third step in leucine catabolism. The genetic deficiency of IVD results in an accumulation of isovaleric acid, which is toxic to the central nervous system and leads to isovaleric acidemia.
Synonyms:	ACAD2
Note:	Immunogen Sequence Homology: Human: 100%; Rabbit: 93%; Pig: 86%; Rat: 86%; Bovine: 86%; Guinea pig: 86%; Dog: 79%; Horse: 79%; Mouse: 79%

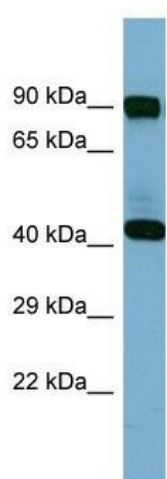


[View online »](#)

Protein Families: Druggable Genome

Protein Pathways: Metabolic pathways, Valine, leucine and isoleucine degradation

Product images:



Host: Rabbit; Target Name: IVD; Sample Tissue: Fetal Spleen lysates; Antibody Dilution: 1.0 ug/ml