

Product datasheet for **TA344319**

KLHL15 Rabbit Polyclonal Antibody

Product data:

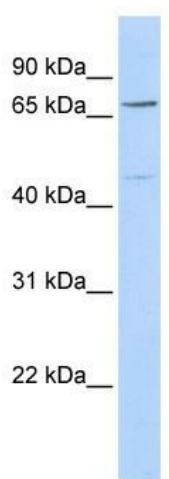
Product Type:	Primary Antibodies
Applications:	WB
Recommended Dilution:	WB
Reactivity:	Human
Host:	Rabbit
Isotype:	IgG
Clonality:	Polyclonal
Immunogen:	The immunogen for anti-KLHL15 antibody: synthetic peptide directed towards the middle region of human KLHL15. Synthetic peptide located within the following region: VLDKQIMVLGGGLCYNGHYSDSILTFDPDENKWKEDYPRMPCKLDGLQVC
Formulation:	Liquid. Purified antibody supplied in 1x PBS buffer with 0.09% (w/v) sodium azide and 2% sucrose. <i>Note that this product is shipped as lyophilized powder to China customers.</i>
Purification:	Affinity Purified
Conjugation:	Unconjugated
Storage:	Store at -20°C as received.
Stability:	Stable for 12 months from date of receipt.
Predicted Protein Size:	66 kDa
Gene Name:	kelch like family member 15
Database Link:	NP_085127 Entrez Gene 80311 Human Q96M94
Background:	KLHL15 is a member of the kelch-like family of proteins that share a common domain structure consisting of an N-terminal broad-complex, tramtrack, bric-a-brac/poxvirus and zinc finger domain and C-terminal kelch repeat motifs. KLHL15 may be involved in protein ubiquitination and cytoskeletal organization.
Synonyms:	HEL-S-305



[View online »](#)

Note: Immunogen Sequence Homology: Pig: 100%; Rat: 100%; Human: 100%; Mouse: 100%; Bovine: 100%; Guinea pig: 100%; Dog: 93%; Horse: 93%; Zebrafish: 93%

Product images:



WB Suggested Anti-KLHL15 Antibody Titration:
0.2-1 ug/ml; ELISA Titer: 1:312500; Positive
Control: 293T cell lysate