

Product datasheet for **TA344318**

Kaptin (KPTN) Rabbit Polyclonal Antibody

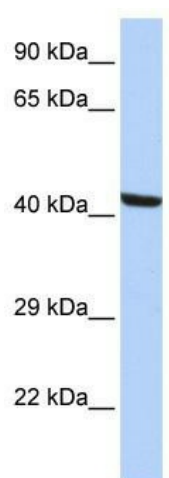
Product data:

Product Type:	Primary Antibodies
Applications:	WB
Recommended Dilution:	WB
Reactivity:	Human
Host:	Rabbit
Isotype:	IgG
Clonality:	Polyclonal
Immunogen:	The immunogen for anti-KPTN antibody: synthetic peptide directed towards the N terminal of human KPTN. Synthetic peptide located within the following region: MGEEAAVAAGPCPLREDSFTRFSSQSNVYGLAGGAGGRGELLAATLKGKVL
Formulation:	Liquid. Purified antibody supplied in 1x PBS buffer with 0.09% (w/v) sodium azide and 2% sucrose.
Purification:	Affinity Purified
Conjugation:	Unconjugated
Storage:	Store at -20°C as received.
Stability:	Stable for 12 months from date of receipt.
Predicted Protein Size:	47 kDa
Gene Name:	kaptin (actin binding protein)
Database Link:	NP_008990 Entrez Gene 11133 Human Q9Y664
Background:	KPTN may be involved in actin dynamics. KPTN may play a role in producing the sensory apparatus in hair cells. KPTN may also play a role in actin rearrangements that accompany platelet activation and stereocilia formation.
Synonyms:	2E4; MRT41
Note:	Immunogen Sequence Homology: Dog: 100%; Pig: 100%; Rat: 100%; Horse: 100%; Human: 100%; Mouse: 100%; Bovine: 100%; Rabbit: 100%; Guinea pig: 100%; Zebrafish: 77%



[View online »](#)

Product images:



WB Suggested Anti-KPTN Antibody Titration: 0.2-1 ug/ml; ELISA Titer: 1:312500; Positive Control: HepG2 cell lysate