

Product datasheet for **TA344317**

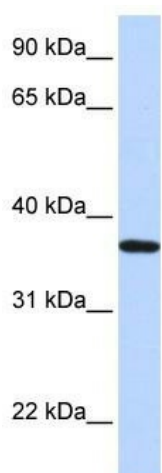
LCN12 Rabbit Polyclonal Antibody

Product data:

Product Type:	Primary Antibodies
Applications:	WB
Recommended Dilution:	WB
Reactivity:	Human
Host:	Rabbit
Isotype:	IgG
Clonality:	Polyclonal
Immunogen:	The immunogen for anti-LCN12 antibody: synthetic peptide directed towards the N terminal of human LCN12. Synthetic peptide located within the following region: GNQFQGEWFLGLAGNSFRPEHRALLNAFTATFELSDDGRFEVWNAMTRG
Formulation:	Liquid. Purified antibody supplied in 1x PBS buffer with 0.09% (w/v) sodium azide and 2% sucrose. <i>Note that this product is shipped as lyophilized powder to China customers.</i>
Purification:	Affinity Purified
Conjugation:	Unconjugated
Storage:	Store at -20°C as received.
Stability:	Stable for 12 months from date of receipt.
Predicted Protein Size:	39 kDa
Gene Name:	lipocalin 12
Database Link:	NP_848631 Entrez Gene 286256 Human Q6JVE5
Background:	LCN12 may play a role in male fertility. LCN12 may act as a retinoid carrier protein within the epididymis.
Synonyms:	MGC34753; MGC48935
Note:	Immunogen Sequence Homology: Human: 100%; Mouse: 79%
Protein Families:	Secreted Protein



[View online »](#)

Product images:

WB Suggested Anti-LCN12 Antibody Titration: 0.2-1 ug/ml; ELISA Titer: 1:312500; Positive Control: Human heart