

## Product datasheet for **TA344314**

### MS4A4A Rabbit Polyclonal Antibody

#### Product data:

Product Type:	Primary Antibodies
Applications:	WB
Recommended Dilution:	WB
Reactivity:	Human
Host:	Rabbit
Isotype:	IgG
Clonality:	Polyclonal
Immunogen:	The immunogen for anti-MS4A4A antibody: synthetic peptide directed towards the N terminal of human MS4A4A. Synthetic peptide located within the following region: MHQTYSRHCRPEESTFSAAMTTMQGMEQAMPGAGPGVPQLGNMAVIHSHL
Formulation:	Liquid. Purified antibody supplied in 1x PBS buffer with 0.09% (w/v) sodium azide and 2% sucrose. <i>Note that this product is shipped as lyophilized powder to China customers.</i>
Purification:	Affinity Purified
Conjugation:	Unconjugated
Storage:	Store at -20°C as received.
Stability:	Stable for 12 months from date of receipt.
Predicted Protein Size:	26 kDa
Gene Name:	membrane spanning 4-domains A4A
Database Link:	<a href="#">NP_683876</a> <a href="#">Entrez Gene 51338 Human</a> <a href="#">Q96JQ5</a>



[View online »](#)

**Background:**

MS4A4A is a member of the membrane-spanning 4A gene family. Members of this nascent protein family are characterized by common structural features and similar intron/exon splice boundaries and display unique expression patterns among hematopoietic cells and nonlymphoid tissues. This gene encodes a member of the membrane-spanning 4A gene family. Members of this nascent protein family are characterized by common structural features and similar intron/exon splice boundaries and display unique expression patterns among hematopoietic cells and nonlymphoid tissues. Alternative splicing of this gene results in several transcript variants; however, not all transcripts have been fully described.

**Synonyms:**

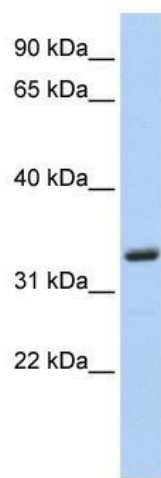
4SPAN1; CD20-L1; CD20L1; HDCME31P; MS4A4; MS4A7

**Note:**

Immunogen Sequence Homology: Human: 100%; Rat: 86%

**Protein Families:**

Druggable Genome, Transmembrane

**Product images:**

WB Suggested Anti-MS4A4A Antibody Titration:  
0.2-1 ug/ml; ELISA Titer: 1:1562500; Positive  
Control: 721\_B cell lysate