

Product datasheet for TA344312

NMRAL1 Rabbit Polyclonal Antibody

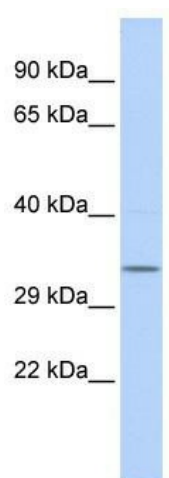
Product data:

Product Type:	Primary Antibodies
Applications:	WB
Recommended Dilution:	WB
Reactivity:	Human
Host:	Rabbit
Isotype:	IgG
Clonality:	Polyclonal
Immunogen:	The immunogen for anti-NMRAL1 antibody: synthetic peptide directed towards the middle region of human NMRAL1. Synthetic peptide located within the following region: TCRHAEYYAALLTKHTRKVVHDAKMTPEYKLGFGARDLANMFRFYA
Formulation:	Liquid. Purified antibody supplied in 1x PBS buffer with 0.09% (w/v) sodium azide and 2% sucrose. <i>Note that this product is shipped as lyophilized powder to China customers.</i>
Purification:	Affinity Purified
Conjugation:	Unconjugated
Storage:	Store at -20°C as received.
Stability:	Stable for 12 months from date of receipt.
Predicted Protein Size:	33 kDa
Gene Name:	NmrA-like family domain containing 1
Database Link:	NP_065728 Entrez Gene 57407 Human Q9HBL8
Background:	The function of this protein is binding , oxidoreductase activity ,and transcription repressor activity.
Synonyms:	HSCARG; SDR48A1
Note:	Immunogen Sequence Homology: Human: 100%; Bovine: 100%; Rabbit: 100%; Dog: 93%; Pig: 92%; Rat: 92%; Mouse: 92%; Guinea pig: 92%; Horse: 85%



[View online »](#)

Product images:



WB Suggested Anti-NMRAL1 Antibody Titration:
0.2-1 ug/ml; ELISA Titer: 1:1562500; Positive
Control: Hela cell lysate