

Product datasheet for **TA344310**

PAFAH1B2 Rabbit Polyclonal Antibody

Product data:

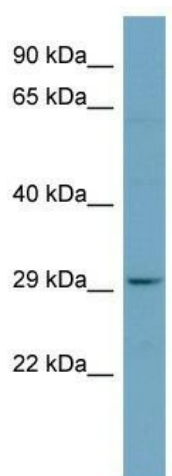
Product Type:	Primary Antibodies
Applications:	WB
Recommended Dilution:	WB
Reactivity:	Human
Host:	Rabbit
Isotype:	IgG
Clonality:	Polyclonal
Immunogen:	The immunogen for anti-PAFAH1B2 antibody: synthetic peptide directed towards the N terminal of human PAFAH1B2. Synthetic peptide located within the following region: MSQGDSNPAAIPHAAEDIQGDDRWMSQHNRFVLDCKDKEPDVLFVGDSMV
Formulation:	Liquid. Purified antibody supplied in 1x PBS buffer with 0.09% (w/v) sodium azide and 2% sucrose. <i>Note that this product is shipped as lyophilized powder to China customers.</i>
Purification:	Affinity Purified
Conjugation:	Unconjugated
Storage:	Store at -20°C as received.
Stability:	Stable for 12 months from date of receipt.
Predicted Protein Size:	25 kDa
Gene Name:	platelet activating factor acetylhydrolase 1b catalytic subunit 2
Database Link:	NP_002563 Entrez Gene 5049 Human P68402
Background:	Platelet-activating factor acetylhydrolase (PAFAH) inactivates platelet-activating factor (PAF) into acetate and LYSO-PAF. This gene encodes the beta subunit of PAFAH, the other subunits are alpha and gamma. Multiple alternatively spliced transcript varia
Synonyms:	HEL-S-303
Note:	Immunogen Sequence Homology: Dog: 100%; Pig: 100%; Rat: 100%; Horse: 100%; Human: 100%; Mouse: 100%; Bovine: 100%; Rabbit: 100%



[View online »](#)

Protein Pathways: Ether lipid metabolism, Metabolic pathways

Product images:



WB Suggested Anti-PAFAH1B2 Antibody Titration: 0.2-1 ug/ml; ELISA Titer: 1:1562500; Positive Control: PANC1 cell lysate PAFAH1B2 is supported by BioGPS gene expression data to be expressed in PANC1