

Product datasheet for **TA344307**

PGLS Rabbit Polyclonal Antibody

Product data:

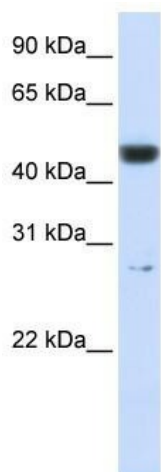
Product Type:	Primary Antibodies
Applications:	IHC, WB
Recommended Dilution:	WB, IHC
Reactivity:	Human
Host:	Rabbit
Isotype:	IgG
Clonality:	Polyclonal
Immunogen:	The immunogen for anti-PGLS antibody: synthetic peptide directed towards the middle region of human PGLS. Synthetic peptide located within the following region: AAVLKRILEDQEENPLPAALVQPHTGKLCWFLDEAAARLLTVPFEKHSTL
Formulation:	Liquid. Purified antibody supplied in 1x PBS buffer with 0.09% (w/v) sodium azide and 2% sucrose. <i>Note that this product is shipped as lyophilized powder to China customers.</i>
Purification:	Affinity Purified
Conjugation:	Unconjugated
Storage:	Store at -20°C as received.
Stability:	Stable for 12 months from date of receipt.
Predicted Protein Size:	28 kDa
Gene Name:	6-phosphogluconolactonase
Database Link:	NP_036220 Entrez Gene 25796 Human O95336
Background:	PGLS belongs to the glucosamine/galactosamine-6-phosphate isomerase family, 6-phosphogluconolactonase subfamily. It is implicated in the hydrolysis of 6-phosphogluconolactone to 6-phosphogluconate.
Synonyms:	6PGL
Note:	Immunogen Sequence Homology: Dog: 100%; Pig: 100%; Horse: 100%; Human: 100%; Bovine: 100%; Rat: 93%; Mouse: 93%; Guinea pig: 93%



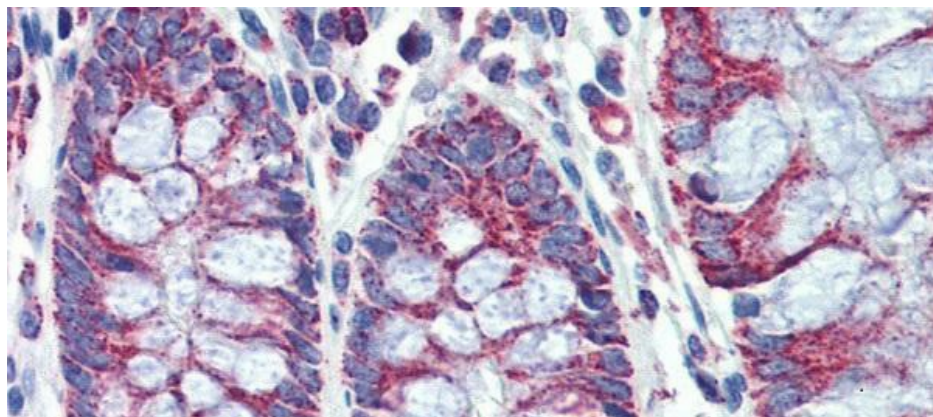
[View online »](#)

Protein Pathways: Metabolic pathways, Pentose phosphate pathway

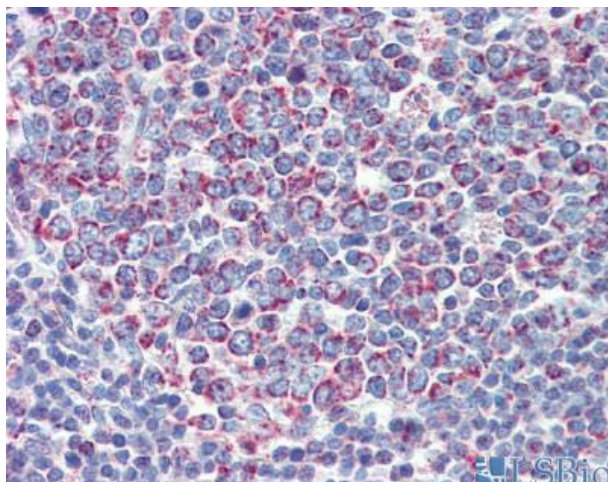
Product images:



WB Suggested Anti-PGLS Antibody Titration: 1 ug/ml; Positive Control: 721_B cell lysate PGLS is strongly supported by BioGPS gene expression data to be expressed in Human 721_B cells



Immunohistochemistry with Human Colon lysate tissue at an antibody concentration of 5.0 ug/ml using anti-PGLS antibody



Human Tonsil