

## Product datasheet for **TA344302**

### RANBP3 Rabbit Polyclonal Antibody

#### Product data:

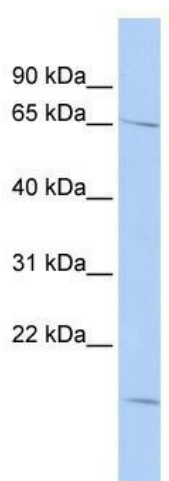
Product Type:	Primary Antibodies
Applications:	WB
Recommended Dilution:	WB
Reactivity:	Human
Host:	Rabbit
Isotype:	IgG
Clonality:	Polyclonal
Immunogen:	The immunogen for anti-RANBP3 antibody: synthetic peptide directed towards the N terminal of human RANBP3. Synthetic peptide located within the following region: MADLANEEKPAIAPPVVFVQKDKGQKSPAEQKNLSDSGEPRGEAEAPHH
Formulation:	Liquid. Purified antibody supplied in 1x PBS buffer with 0.09% (w/v) sodium azide and 2% sucrose. <i>Note that this product is shipped as lyophilized powder to China customers.</i>
Purification:	Affinity Purified
Conjugation:	Unconjugated
Storage:	Store at -20°C as received.
Stability:	Stable for 12 months from date of receipt.
Predicted Protein Size:	62 kDa
Gene Name:	RAN binding protein 3
Database Link:	<a href="#">NP_015561</a> <a href="#">Entrez Gene 8498 Human</a> <a href="#">Q9H6Z4</a>
Background:	RANBP3 is a protein with a RanBD1 domain that is found in both the nucleus and cytoplasm. This protein plays a role in nuclear export as part of a heteromeric complex. This gene encodes a protein with a RanBD1 domain that is found in both the nucleus and cytoplasm. This protein plays a role in nuclear export as part of a heteromeric complex. Alternate transcriptional splice variants, encoding different isoforms, have been characterized.
Synonyms:	DKFZp58611520



[View online »](#)

**Note:** Immunogen Sequence Homology: Human: 100%; Pig: 93%; Guinea pig: 93%; Dog: 86%; Rat: 86%; Rabbit: 86%

### Product images:



WB Suggested Anti-RANBP3 Antibody Titration: 0.2-1 ug/ml; ELISA Titer: 1:312500; Positive Control: HepG2 cell lysate RANBP3 is supported by BioGPS gene expression data to be expressed in HepG2