

## Product datasheet for **TA344300**

### RPL13A Rabbit Polyclonal Antibody

#### Product data:

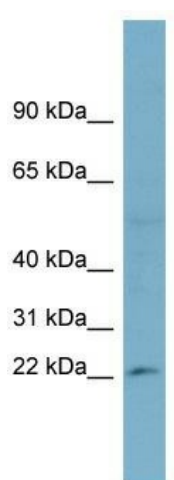
Product Type:	Primary Antibodies
Applications:	WB
Recommended Dilution:	WB
Reactivity:	Human
Host:	Rabbit
Isotype:	IgG
Clonality:	Polyclonal
Immunogen:	The immunogen for anti-RPL13A antibody: synthetic peptide directed towards the middle region of human RPL13A. Synthetic peptide located within the following region: HEVGWKYQAVTATLEEKRKEKAKIHYRKKKQLMRLRKQAEKNVEKKIDKY
Formulation:	Liquid. Purified antibody supplied in 1x PBS buffer with 0.09% (w/v) sodium azide and 2% sucrose. <i>Note that this product is shipped as lyophilized powder to China customers.</i>
Purification:	Affinity Purified
Conjugation:	Unconjugated
Storage:	Store at -20°C as received.
Stability:	Stable for 12 months from date of receipt.
Predicted Protein Size:	22 kDa
Gene Name:	ribosomal protein L13a
Database Link:	<a href="#">NP_036555</a> <a href="#">Entrez Gene 23521 Human P40429</a>
Background:	Ribosomes, the organelles that catalyze protein synthesis, consist of a small 40S subunit and a large 60S subunit. Together these subunits are composed of 4 RNA species and approximately 80 structurally distinct proteins. This gene encodes a ribosomal pro
Synonyms:	L13A; TSTA1
Note:	Immunogen Sequence Homology: Dog: 100%; Pig: 100%; Rat: 100%; Horse: 100%; Human: 100%; Mouse: 100%; Bovine: 93%; Rabbit: 93%; Guinea pig: 93%; Zebrafish: 91%; Sheep: 86%



[View online »](#)

Protein Pathways: Ribosome

### Product images:



WB Suggested Anti-RPL13A Antibody Titration:  
0.2-1 ug/ml; ELISA Titer: 1:312500; Positive  
Control: COLO205 cell lysate RPL13A is strongly  
supported by BioGPS gene expression data to be  
expressed in Human COLO205 cells