

Product datasheet for **TA344299**

SAMD8 Rabbit Polyclonal Antibody

Product data:

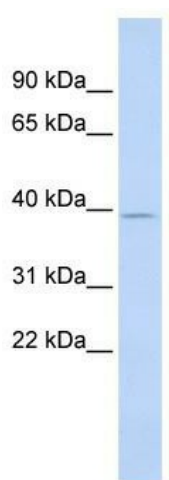
Product Type:	Primary Antibodies
Applications:	WB
Recommended Dilution:	WB
Reactivity:	Human
Host:	Rabbit
Isotype:	IgG
Clonality:	Polyclonal
Immunogen:	The immunogen for anti-SAMD8 antibody: synthetic peptide directed towards the middle region of human SAMD8. Synthetic peptide located within the following region: MQTYPLPDIFLDSVPRIPWAFAMTEVCGMILCYIWLLVLLLHKHSILL
Formulation:	Liquid. Purified antibody supplied in 1x PBS buffer with 0.09% (w/v) sodium azide and 2% sucrose. <i>Note that this product is shipped as lyophilized powder to China customers.</i>
Purification:	Affinity Purified
Conjugation:	Unconjugated
Storage:	Store at -20°C as received.
Stability:	Stable for 12 months from date of receipt.
Predicted Protein Size:	36 kDa
Gene Name:	sterile alpha motif domain containing 8
Database Link:	NP_653261 Entrez Gene 142891 Human Q96LT4
Background:	SAMD8 is a multi-pass membrane protein. It belongs to the sphingomyelin synthase family and contains 1 SAM (sterile alpha motif) domain. The function of the SAMD8 protein remains unknown.
Synonyms:	HEL-177; SMSr
Note:	Immunogen Sequence Homology: Dog: 100%; Pig: 100%; Rat: 100%; Horse: 100%; Human: 100%; Mouse: 100%; Bovine: 100%; Rabbit: 100%; Zebrafish: 100%; Guinea pig: 100%



[View online »](#)

Protein Families: Transmembrane

Product images:



WB Suggested Anti-SAMd8 Antibody Titration:
0.2-1 ug/ml; ELISA Titer: 1:312500; Positive
Control: Human heart