

Product datasheet for **TA344291**

beta II Tubulin (TUBB2A) Rabbit Polyclonal Antibody

Product data:

Product Type:	Primary Antibodies
Applications:	WB
Recommended Dilution:	WB
Reactivity:	Mouse
Host:	Rabbit
Isotype:	IgG
Clonality:	Polyclonal
Immunogen:	The immunogen for Anti-Tubb2a antibody is: synthetic peptide directed towards the C-terminal region of Mouse Tubb2a. Synthetic peptide located within the following region: RKAFLHWYTGEGMDEMEFTEAESNMNDLVSEYQQYQDATADEQGEFEEEE
Formulation:	Liquid. Purified antibody supplied in 1x PBS buffer with 0.09% (w/v) sodium azide and 2% sucrose. <i>Note that this product is shipped as lyophilized powder to China customers.</i>
Purification:	Affinity Purified
Conjugation:	Unconjugated
Storage:	Store at -20°C as received.
Stability:	Stable for 12 months from date of receipt.
Predicted Protein Size:	50 kDa
Gene Name:	tubulin beta 2A class IIa
Database Link:	NP_001060 Entrez Gene 22151 Mouse Q13885
Background:	Tubulin is the major constituent of microtubules. It binds two moles of GTP, one at an exchangeable site on the beta chain and one at a non-exchangeable site on the alpha-chain.
Synonyms:	CDCBM5; dj40E16.7; TUBB; TUBB2
Note:	Immunogen Sequence Homology: Dog: 100%; Pig: 100%; Rat: 100%; Horse: 100%; Human: 100%; Mouse: 100%; Bovine: 100%; Rabbit: 100%; Zebrafish: 100%; Guinea pig: 100%

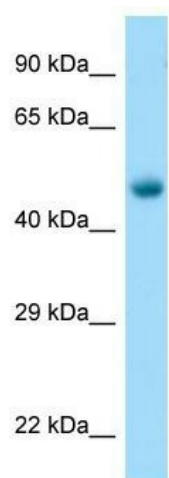


[View online »](#)

Protein Families: Druggable Genome

Protein Pathways: Gap junction, Pathogenic Escherichia coli infection

Product images:



WB Suggested Anti-Tubb2a Antibody; Titration:
1.0 ug/ml; Positive Control: Mouse Muscle