

Product datasheet for **TA344286**

LRP1 Rabbit Polyclonal Antibody

Product data:

Product Type:	Primary Antibodies
Applications:	IHC, WB
Recommended Dilution:	WB
Reactivity:	Human
Host:	Rabbit
Isotype:	IgG
Clonality:	Polyclonal
Immunogen:	The immunogen for anti-LRP1 antibody: synthetic peptide directed towards the middle region of human LRP1. Synthetic peptide located within the following region: ATYLSGAQVSTITPTSTRQTTAMDFSYANETVCWVHVGDSAAQTQLKCAR
Formulation:	Liquid. Purified antibody supplied in 1x PBS buffer with 0.09% (w/v) sodium azide and 2% sucrose. <i>Note that this product is shipped as lyophilized powder to China customers.</i>
Purification:	Affinity Purified
Conjugation:	Unconjugated
Storage:	Store at -20°C as received.
Stability:	Stable for 12 months from date of receipt.
Predicted Protein Size:	48 kDa
Gene Name:	LDL receptor related protein 1
Database Link:	NP_002323 Entrez Gene 4035 Human Q07954
Background:	Low-density lipoprotein receptor-related protein 1 (LDLR-related protein, LRP1) is a multifunctional endocytic receptor with an important role in regulating the activity of proteinases in the extracellular matrix. It is also involved in intracellular signaling and the subcellular translocation of preassembled signaling complexes from the plasma membrane.
Synonyms:	A2MR; APOER; APR; CD91; IGFBP3R; LRP; LRP1A; TGFBR5
Note:	Immunogen Sequence Homology:

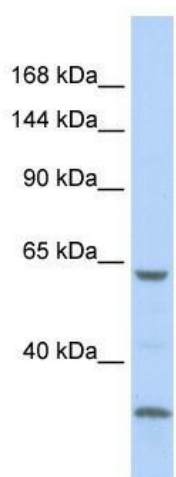


[View online »](#)

Protein Families: Druggable Genome, Transmembrane

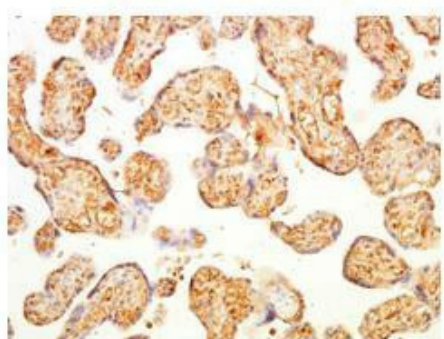
Protein Pathways: Alzheimer's disease

Product images:



LRP1

WB Suggested Anti-LRP1 Antibody Titration: 0.2-1 ug/ml; ELISA Titer: 1:1562500; Positive Control: 721_B cell lysate



Brown: LRP1
Purple: Haematoxylin

Lanes : Human placenta Primary Antibody Dilution : 1:500 Secondary Antibody : Anti-rabbit-HRP Secondary Antibody Dilution : 1:5000 Gene Name : Brown: LRP1 Purple: Haematoxylin Submitted by : LRP1