

Product datasheet for **TA344280**

ACRBP Rabbit Polyclonal Antibody

Product data:

Product Type:	Primary Antibodies
Applications:	WB
Recommended Dilution:	WB
Reactivity:	Human
Host:	Rabbit
Isotype:	IgG
Clonality:	Polyclonal
Immunogen:	The immunogen for Anti-ACRBP antibody is: synthetic peptide directed towards the N-terminal region of Human ACRBP. Synthetic peptide located within the following region: KVLLPLAPAAAQDSTQASTPGSPLSPTEYERFFALLTPTWKAETTCRLR
Formulation:	Liquid. Purified antibody supplied in 1x PBS buffer with 0.09% (w/v) sodium azide and 2% sucrose.
Purification:	Affinity Purified
Conjugation:	Unconjugated
Storage:	Store at -20°C as received.
Stability:	Stable for 12 months from date of receipt.
Predicted Protein Size:	59 kDa
Gene Name:	acrosin binding protein
Database Link:	NP_115878 Entrez Gene 84519 Human Q8NEB7
Background:	The protein encoded by this gene is similar to proacrosin binding protein sp32 precursor found in mouse, guinea pig, and pig. This protein is located in the sperm acrosome and is thought to function as a binding protein to proacrosin for packaging and condensation of the acrosin zymogen in the acrosomal matrix. This protein is a member of the cancer/testis family of antigens and it is found to be immunogenic. In normal tissues, this mRNA is expressed only in testis, whereas it is detected in a range of different tumor types such as bladder, breast, lung, liver, and colon.



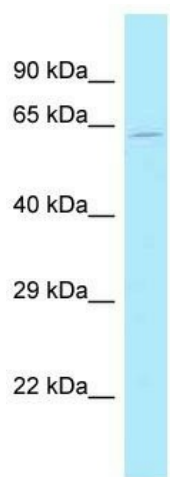
[View online »](#)

Synonyms: CT23; OY-TES-1; SP32

Note: Immunogen Sequence Homology: Human: 100%; Rabbit: 93%; Dog: 86%; Horse: 86%; Pig: 79%; Bovine: 79%

Protein Families: Secreted Protein

Product images:



Host: Rabbit

Target Name: ACRBP

Sample Tissue: HeLa Cell Lysate

Antibody Dilution: 1.0 μ g/ml

Host: Rabbit; Target Name: ACRBP; Sample Tissue: HeLa Whole Cell lysates; Antibody Dilution: 1.0 ug/ml