

Product datasheet for **TA344277**

ATP6V1E2 Rabbit Polyclonal Antibody

Product data:

Product Type:	Primary Antibodies
Applications:	WB
Recommended Dilution:	WB
Reactivity:	Human
Host:	Rabbit
Isotype:	IgG
Clonality:	Polyclonal
Immunogen:	The immunogen for anti-ATP6V1E2 antibody: synthetic peptide directed towards the middle region of human ATP6V1E2. Synthetic peptide located within the following region: LMSTMRNQARLKVLRARNDLISDLLSEAKLRLSRIVEDPEVYQGGLLDKLV
Formulation:	Liquid. Purified antibody supplied in 1x PBS buffer with 0.09% (w/v) sodium azide and 2% sucrose. <i>Note that this product is shipped as lyophilized powder to China customers.</i>
Purification:	Affinity Purified
Conjugation:	Unconjugated
Storage:	Store at -20°C as received.
Stability:	Stable for 12 months from date of receipt.
Predicted Protein Size:	26 kDa
Gene Name:	ATPase H ⁺ transporting V1 subunit E2
Database Link:	NP_542384 Entrez Gene 90423 Human Q96A05
Background:	ATP6V1E2 is a subunit of the peripheral V1 complex of vacuolar ATPase essential for assembly or catalytic function. V-ATPase is responsible for acidifying a variety of intracellular compartments in eukaryotic cells. This isoform is essential for energy coupling involved in acidification of acrosome.
Synonyms:	ATP6E1; ATP6EL2; ATP6V1EL2; VMA4

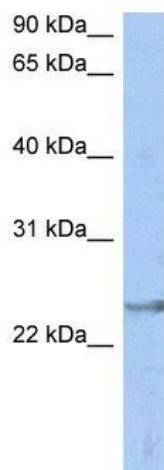


[View online »](#)

Note: Immunogen Sequence Homology: Human: 100%; Pig: 86%; Rat: 86%; Guinea pig: 86%; Dog: 79%; Horse: 79%; Mouse: 79%; Sheep: 79%; Bovine: 79%; Rabbit: 79%

Protein Pathways: Epithelial cell signaling in Helicobacter pylori infection, Metabolic pathways, Oxidative phosphorylation, Vibrio cholerae infection

Product images:



WB Suggested Anti-ATP6V1E2 Antibody Titration:
0.2-1 ug/ml; ELISA Titer: 1:1562500; Positive
Control: Human Spleen