

Product datasheet for **TA344276**

Zinc Alpha 2 Glycoprotein (AZGP1) Rabbit Polyclonal Antibody

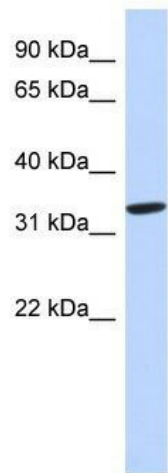
Product data:

Product Type:	Primary Antibodies
Applications:	WB
Recommended Dilution:	WB
Reactivity:	Human
Host:	Rabbit
Isotype:	IgG
Clonality:	Polyclonal
Immunogen:	The immunogen for anti-AZGP1 antibody: synthetic peptide directed towards the N terminal of human AZGP1. Synthetic peptide located within the following region: MVRMVPVLLSLLLLLGPVAVPQENQDGRYSLTYIYTGLSKHVEDVPAFQAL
Formulation:	Liquid. Purified antibody supplied in 1x PBS buffer with 0.09% (w/v) sodium azide and 2% sucrose. <i>Note that this product is shipped as lyophilized powder to China customers.</i>
Purification:	Affinity Purified
Conjugation:	Unconjugated
Storage:	Store at -20°C as received.
Stability:	Stable for 12 months from date of receipt.
Predicted Protein Size:	33 kDa
Gene Name:	alpha-2-glycoprotein 1, zinc-binding
Database Link:	NP_001176 Entrez Gene 563 Human P25311
Background:	Stimulates lipid degradation in adipocytes and causes the extensive fat losses associated with some advanced cancers. AZGP1 may bind polyunsaturated fatty acids.
Synonyms:	ZA2G; ZAG
Note:	Immunogen Sequence Homology: Human: 100%; Dog: 79%
Protein Families:	Secreted Protein



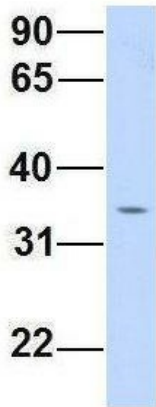
[View online »](#)

Product images:



WB Suggested Anti-AZGP1 Antibody Titration: 0.2-1 ug/ml; ELISA Titer: 1:1562500; Positive Control: Human heart

AZGP1



Rabbit Anti-AZGP1
Sample Type: Human 293T
Antibody Concentration: 1ug/mL

Host: Rabbit; Target Name: AZGP1; Sample Tissue: 293T; Antibody Dilution: 1.0 ug/ml