

## Product datasheet for **TA344274**

### BPNT1 Rabbit Polyclonal Antibody

#### Product data:

Product Type:	Primary Antibodies
Applications:	WB
Recommended Dilution:	WB
Reactivity:	Human
Host:	Rabbit
Isotype:	IgG
Clonality:	Polyclonal
Immunogen:	The immunogen for anti-BPNT1 antibody: synthetic peptide directed towards the N terminal of human BPNT1. Synthetic peptide located within the following region: DRVTIQELTAPLLTTAQAKPGETQEETNSGEEPFIETPRQDGVSRRFIP
Formulation:	Liquid. Purified antibody supplied in 1x PBS buffer with 0.09% (w/v) sodium azide and 2% sucrose. <i>Note that this product is shipped as lyophilized powder to China customers.</i>
Purification:	Affinity Purified
Conjugation:	Unconjugated
Storage:	Store at -20°C as received.
Stability:	Stable for 12 months from date of receipt.
Predicted Protein Size:	29 kDa
Gene Name:	3'(2'), 5'-bisphosphate nucleotidase 1
Database Link:	<a href="#">NP_006076</a> <a href="#">Entrez Gene 10380 Human</a> <a href="#">O95861</a>



[View online »](#)

**Background:**

BPNT1, also called bisphosphate 3-prime-nucleotidase, or BPntase, is a member of a magnesium-dependent phosphomonoesterase family. Lithium, a major drug used to treat manic depression, acts as an uncompetitive inhibitor of BPntase. The predicted human protein is 92% identical to mouse BPntase. BPntase's physiologic role in nucleotide metabolism may be regulated by inositol signaling pathways. The inhibition of human BPntase may account for lithium-induced nephrotoxicity. BPNT1, also called bisphosphate 3-prime-nucleotidase, or BPntase, is a member of a magnesium-dependent phosphomonoesterase family. Lithium, a major drug used to treat manic depression, acts as an uncompetitive inhibitor of BPntase. The predicted human protein is 92% identical to mouse BPntase. BPntase's physiologic role in nucleotide metabolism may be regulated by inositol signaling pathways. The inhibition of human BPntase may account for lithium-induced nephrotoxicity.

**Synonyms:**

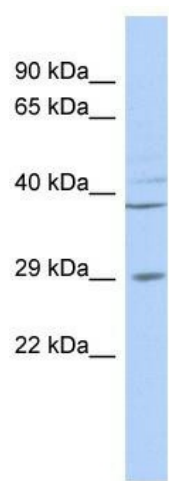
HEL20; PIP

**Note:**

Immunogen Sequence Homology: Human: 100%; Bovine: 100%; Rabbit: 100%; Dog: 93%; Pig: 93%; Rat: 91%; Horse: 86%; Mouse: 86%; Guinea pig: 86%

**Protein Pathways:**

Sulfur metabolism

**Product images:**

WB Suggested Anti-BPNT1 Antibody Titration: 0.2-1 ug/ml; ELISA Titer: 1:12500; Positive Control: MCF7 cell lysate