

Product datasheet for **TA344272**

Calreticulin 3 (CALR3) Rabbit Polyclonal Antibody

Product data:

Product Type:	Primary Antibodies
Applications:	WB
Recommended Dilution:	WB
Reactivity:	Human
Host:	Rabbit
Isotype:	IgG
Clonality:	Polyclonal
Immunogen:	The immunogen for anti-CALR3 antibody: synthetic peptide directed towards the N terminal of human CALR3. Synthetic peptide located within the following region: MAGPQQPPYLHLAELTASQFLEIWKHFDADGNGYIEGKELENFFQELEK
Formulation:	Liquid. Purified antibody supplied in 1x PBS buffer with 0.09% (w/v) sodium azide and 2% sucrose. <i>Note that this product is shipped as lyophilized powder to China customers.</i>
Purification:	Affinity Purified
Conjugation:	Unconjugated
Storage:	Store at -20°C as received.
Stability:	Stable for 12 months from date of receipt.
Predicted Protein Size:	42 kDa
Gene Name:	calreticulin 3
Database Link:	NP_659483 Entrez Gene 125972 Human Q96L12



[View online »](#)

Background:

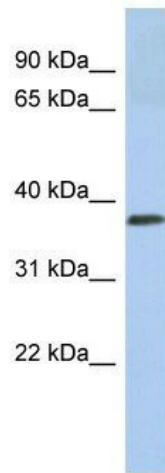
Calreticulins, such as CALR3, are Ca(2+)-binding chaperones localized mainly in the endoplasmic/sarcoplasmic reticulum. Calreticulins, such as CALR3, are Ca(2+)-binding chaperones localized mainly in the endoplasmic/sarcoplasmic reticulum Persson et al. (2002) [PubMed 12384296]. [supplied by OMIM]. PRIMARYREFSEQ_SPAN PRIMARY_IDENTIFIER PRIMARY_SPAN COMP 1-4 BC014595.2 1-4 5-443 DB459545.1 7-445 444-528 BP370084.1 424-508 529-1034 BC014595.2 529-1034 1035-1035 AC008764.9 27895-27895 c 1036-1273 BC014595.2 1036-1273 1274-1285 DB510196.1 313-324

Synonyms:

CMH19; CRT2; CT93

Note:

Immunogen Sequence Homology: Dog: 100%; Horse: 100%; Human: 100%; Pig: 93%; Bovine: 93%; Rabbit: 93%; Rat: 92%; Mouse: 92%; Guinea pig: 86%

Product images:

WB Suggested Anti-CALR3 Antibody Titration: 0.2-1 ug/ml; ELISA Titer: 1:62500; Positive Control: Jurkat cell lysate