

## Product datasheet for **TA344270**

### **CAPZA3 Rabbit Polyclonal Antibody**

#### **Product data:**

<b>Product Type:</b>	Primary Antibodies
<b>Applications:</b>	WB
<b>Recommended Dilution:</b>	WB
<b>Reactivity:</b>	Human
<b>Host:</b>	Rabbit
<b>Isotype:</b>	IgG
<b>Clonality:</b>	Polyclonal
<b>Immunogen:</b>	The immunogen for anti-CAPZA3 antibody: synthetic peptide directed towards the N terminal of human CAPZA3. Synthetic peptide located within the following region: MTLSVLSRKDKERVIRLLLLQAPPGEFVNAFDDLCLLIRDEKLMHHQGEC
<b>Formulation:</b>	Liquid. Purified antibody supplied in 1x PBS buffer with 0.09% (w/v) sodium azide and 2% sucrose. <i>Note that this product is shipped as lyophilized powder to China customers.</i>
<b>Purification:</b>	Affinity Purified
<b>Conjugation:</b>	Unconjugated
<b>Storage:</b>	Store at -20°C as received.
<b>Stability:</b>	Stable for 12 months from date of receipt.
<b>Predicted Protein Size:</b>	33 kDa
<b>Gene Name:</b>	capping actin protein of muscle Z-line alpha subunit 3
<b>Database Link:</b>	<a href="#">NP_201585</a> <a href="#">Entrez Gene 93661 Human</a> <a href="#">Q96KX2</a>



[View online »](#)

**Background:**

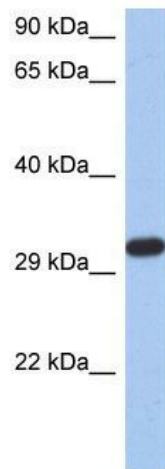
F-actin-capping proteins bind in a Ca<sup>2+</sup>-independent manner to the fast growing ends of actin filaments (barbed end) thereby blocking the exchange of subunits at these ends. Unlike other capping proteins (such as gelsolin and severin), these proteins do not sever actin filaments. CAPZA3 may play a role in the morphogenesis of spermatid. This gene encodes an actin capping protein, one of the F-actin capping protein alpha subunit family. The encoded protein is predominantly localized to the neck region of ejaculated sperm, other immunohistochemical signals were found in the tail and postacrosomal regions. The encoded protein may also form heterodimers of alpha and beta subunits. This protein may be important in determining sperm architecture and male fertility.

**Synonyms:**

CAPPA3; Gsg3; HEL-S-86

**Note:**

Immunogen Sequence Homology: Human: 100%; Dog: 92%; Pig: 92%; Rabbit: 92%; Guinea pig: 92%; Rat: 85%; Mouse: 85%

**Product images:**

WB Suggested Anti-CAPZA3 Antibody Titration:  
0.2-1 ug/ml; ELISA Titer: 1:1562500; Positive  
Control: DU145 cell lysate