

## Product datasheet for **TA344268**

### CDKL2 Rabbit Polyclonal Antibody

#### Product data:

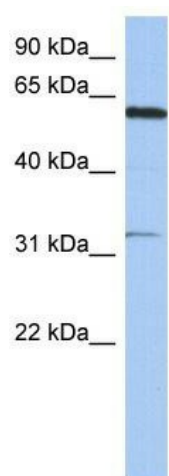
Product Type:	Primary Antibodies
Applications:	WB
Recommended Dilution:	WB
Reactivity:	Human
Host:	Rabbit
Isotype:	IgG
Clonality:	Polyclonal
Immunogen:	The immunogen for anti-CDKL2 antibody: synthetic peptide directed towards the N terminal of human CDKL2. Synthetic peptide located within the following region: MEKYENLGLVGEGSYGMVMKCRNKDTGRIVAIAIKKFLESDDDKMVKKIAMR
Formulation:	Liquid. Purified antibody supplied in 1x PBS buffer with 0.09% (w/v) sodium azide and 2% sucrose. <i>Note that this product is shipped as lyophilized powder to China customers.</i>
Purification:	Affinity Purified
Conjugation:	Unconjugated
Storage:	Store at -20°C as received.
Stability:	Stable for 12 months from date of receipt.
Predicted Protein Size:	54 kDa
Gene Name:	cyclin dependent kinase like 2
Database Link:	<a href="#">NP_003939</a> <a href="#">Entrez Gene 8999 Human Q92772</a>
Background:	The specific function of the protein remains unknown. This gene product is a member of a large family of CDC2-related serine/threonine protein kinases. It accumulates primarily in the cytoplasm, with lower levels in the nucleus.
Synonyms:	KKIAMRE; P56
Note:	Immunogen Sequence Homology: Dog: 100%; Pig: 100%; Rat: 100%; Horse: 100%; Human: 100%; Mouse: 100%; Bovine: 100%; Rabbit: 100%; Guinea pig: 100%



[View online »](#)

Protein Families: Druggable Genome, Protein Kinase

### Product images:



WB Suggested Anti-CDKL2 Antibody Titration: 0.2-1 ug/ml; ELISA Titer: 1:312500; Positive Control: SH-SY5Y cell lysate