

## Product datasheet for **TA344267**

### CEP70 Rabbit Polyclonal Antibody

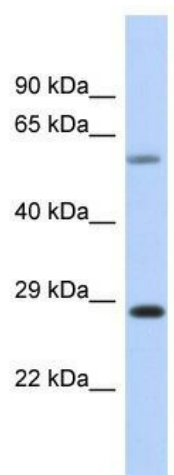
#### Product data:

Product Type:	Primary Antibodies
Applications:	WB
Recommended Dilution:	WB
Reactivity:	Human
Host:	Rabbit
Isotype:	IgG
Clonality:	Polyclonal
Immunogen:	The immunogen for Anti-CEP70 antibody is: synthetic peptide directed towards the N-terminal region of Human CEP70. Synthetic peptide located within the following region: MFPVAPKPKQDSSQPSDRLMTEKQQEEAEWESINVLLMMHGLKPLSLVKRT
Formulation:	Liquid. Purified antibody supplied in 1x PBS buffer with 0.09% (w/v) sodium azide and 2% sucrose. <i>Note that this product is shipped as lyophilized powder to China customers.</i>
Purification:	Affinity Purified
Conjugation:	Unconjugated
Storage:	Store at -20°C as received.
Stability:	Stable for 12 months from date of receipt.
Predicted Protein Size:	23 kDa
Gene Name:	centrosomal protein 70
Database Link:	<a href="#">NP_077817</a> <a href="#">Entrez Gene 80321 Human</a> <a href="#">Q8NHQ1</a>
Background:	CEP70 plays a role in the organization of both preexisting and nascent microtubules in interphase cells. During mitosis, it is required for the organization and orientation of the mitotic spindle.
Synonyms:	BITE
Note:	Immunogen Sequence Homology: Human: 100%



[View online »](#)

## Product images:



Host: Rabbit; Target Name: CEP70; Sample  
Tissue: Placenta lysates; Antibody Dilution: 1.0  
ug/ml