

Product datasheet for **TA344266**

CRYL1 Rabbit Polyclonal Antibody

Product data:

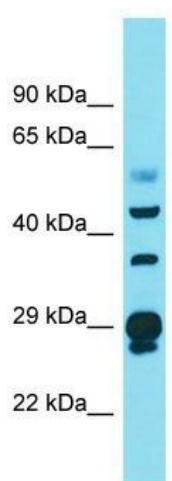
Product Type:	Primary Antibodies
Applications:	WB
Recommended Dilution:	WB
Reactivity:	Human
Host:	Rabbit
Isotype:	IgG
Clonality:	Polyclonal
Immunogen:	The immunogen for Anti-CRYL1 antibody is: synthetic peptide directed towards the N-terminal region of Human CRYL1. Synthetic peptide located within the following region: CVVIVGSGVIGRSWAMLFASGGFQVKLYDIEQQQIRNALENIRKEMKLLLE
Formulation:	Liquid. Purified antibody supplied in 1x PBS buffer with 0.09% (w/v) sodium azide and 2% sucrose.
Purification:	Affinity Purified
Conjugation:	Unconjugated
Storage:	Store at -20°C as received.
Stability:	Stable for 12 months from date of receipt.
Predicted Protein Size:	35 kDa
Gene Name:	crystallin lambda 1
Database Link:	NP_057058 Entrez Gene 51084 Human Q9Y2S2
Background:	The uronate cycle functions as an alternative glucose metabolic pathway, accounting for about 5% of daily glucose catabolism. The product of this gene catalyzes the dehydrogenation of L-gulonate into dehydro-L-gulonate in the uronate cycle. The enzyme requires NAD(H) as a coenzyme, and is inhibited by inorganic phosphate. A similar gene in the rabbit is thought to serve a structural role in the lens of the eye.
Synonyms:	GDH; HEL30; lambda-CRY



[View online »](#)

Note: Immunogen Sequence Homology: Human: 100%; Pig: 93%; Rat: 93%; Guinea pig: 93%; Mouse: 86%; Dog: 79%; Horse: 79%; Yeast: 77%

Product images:



Host: Rabbit; Target Name: CRYL1; Sample Tissue: Ovary Tumor lysates; Antibody Dilution: 1.0 ug/ml