

Product datasheet for **TA344261**

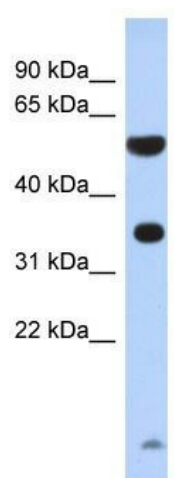
ESSPL (PRSS48) Rabbit Polyclonal Antibody

Product data:

Product Type:	Primary Antibodies
Applications:	WB
Recommended Dilution:	WB
Reactivity:	Human
Host:	Rabbit
Isotype:	IgG
Clonality:	Polyclonal
Immunogen:	The immunogen for anti-ESSPL antibody: synthetic peptide directed towards the N terminal of human ESSPL. Synthetic peptide located within the following region: MATDELATKLSRRLQMEGEGGGGETPEQPGLNGAAAAAAGAPDEAAEALGS
Formulation:	Liquid. Purified antibody supplied in 1x PBS buffer with 0.09% (w/v) sodium azide and 2% sucrose. <i>Note that this product is shipped as lyophilized powder to China customers.</i>
Purification:	Affinity Purified
Conjugation:	Unconjugated
Storage:	Store at -20°C as received.
Stability:	Stable for 12 months from date of receipt.
Predicted Protein Size:	37 kDa
Gene Name:	protease, serine 48
Database Link:	NP_899231 Entrez Gene 345062 Human Q7RTY5
Background:	The specific function of ESSPL is not yet known.
Synonyms:	ESSPL
Note:	Immunogen Sequence Homology: Human: 100%; Pig: 91%; Dog: 86%; Rat: 79%; Rabbit: 79%; Guinea pig: 79%
Protein Families:	Druggable Genome



[View online »](#)

Product images:

WB Suggested Anti-ESSPL Antibody Titration: 0.2-1 ug/ml; ELISA Titer: 1:312500; Positive Control: Human brain