

Product datasheet for **TA344260**

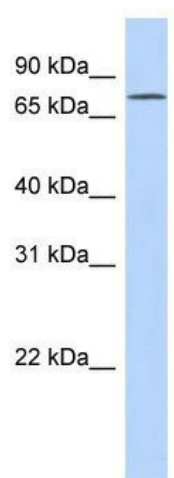
EXD3 Rabbit Polyclonal Antibody

Product data:

Product Type:	Primary Antibodies
Applications:	WB
Recommended Dilution:	WB
Reactivity:	Human
Host:	Rabbit
Isotype:	IgG
Clonality:	Polyclonal
Immunogen:	The immunogen for anti-FLJ20433 antibody: synthetic peptide directed towards the N terminal of human FLJ20433. Synthetic peptide located within the following region: MGPAGCAFTLLLLLGISVCGQPVYSSRVVGGQDAAAGRWPWQVSLHFDHN
Formulation:	Liquid. Purified antibody supplied in 1x PBS buffer with 0.09% (w/v) sodium azide and 2% sucrose. <i>Note that this product is shipped as lyophilized powder to China customers.</i>
Purification:	Affinity Purified
Conjugation:	Unconjugated
Storage:	Store at -20°C as received.
Stability:	Stable for 12 months from date of receipt.
Predicted Protein Size:	83 kDa
Gene Name:	exonuclease 3'-5' domain containing 3
Database Link:	NP_060290 Entrez Gene 54932 Human Q8N9H8
Background:	The specific function of FLJ20433 is not yet known.
Synonyms:	mut-7
Note:	Immunogen Sequence Homology: Human: 100%; Goat: 92%



[View online »](#)

Product images:

WB Suggested Anti-FLJ20433 Antibody Titration:
0.2-1 ug/ml; ELISA Titer: 1:312500; Positive
Control: Human heart