

Product datasheet for **TA344258**

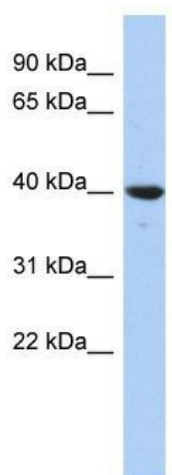
TXNL2 (GLRX3) Rabbit Polyclonal Antibody

Product data:

Product Type:	Primary Antibodies
Applications:	WB
Recommended Dilution:	WB
Reactivity:	Human
Host:	Rabbit
Isotype:	IgG
Clonality:	Polyclonal
Immunogen:	The immunogen for anti-GLRX3 antibody: synthetic peptide directed towards the N terminal of human GLRX3. Synthetic peptide located within the following region: MEELLRRELGCSSVRATGHSGGGCISQGRSYDTDQGRVFKVNPKEARR
Formulation:	Liquid. Purified antibody supplied in 1x PBS buffer with 0.09% (w/v) sodium azide and 2% sucrose. <i>Note that this product is shipped as lyophilized powder to China customers.</i>
Purification:	Affinity Purified
Conjugation:	Unconjugated
Storage:	Store at -20°C as received.
Stability:	Stable for 12 months from date of receipt.
Predicted Protein Size:	37 kDa
Gene Name:	glutaredoxin 3
Database Link:	NP_006532 Entrez Gene 10539 Human O76003
Background:	GLRX3 may play a role in regulating the function of the thioredoxin system.
Synonyms:	GLRX4; GRX3; GRX4; PICOT; TXNL2; TXNL3
Note:	Immunogen Sequence Homology: Human: 100%; Pig: 93%; Bovine: 93%; Dog: 86%; Mouse: 85%
Protein Families:	Druggable Genome



[View online »](#)

Product images:

WB Suggested Anti-GLRX3 Antibody Titration: 0.2-1 ug/ml; ELISA Titer: 1:312500; Positive Control: HepG2 cell lysate. GLRX3 is strongly supported by BioGPS gene expression data to be expressed in Human HepG2 cells