

## Product datasheet for **TA344256**

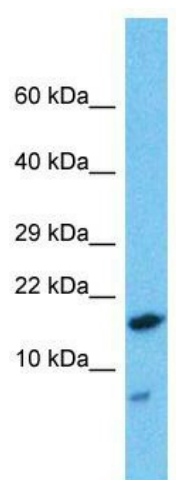
### HDDC2 Rabbit Polyclonal Antibody

#### Product data:

Product Type:	Primary Antibodies
Applications:	WB
Recommended Dilution:	WB
Reactivity:	Human
Host:	Rabbit
Isotype:	IgG
Clonality:	Polyclonal
Immunogen:	The immunogen for Anti-HDDC2 antibody is: synthetic peptide directed towards the N-terminal region of Human HDDC2. Synthetic peptide located within the following region: ASVSSATFSGHGARSLLQLRLVGLKRVPRGWVYRNVQRPESVSDHMY
Formulation:	Liquid. Purified antibody supplied in 1x PBS buffer with 0.09% (w/v) sodium azide and 2% sucrose. <i>Note that this product is shipped as lyophilized powder to China customers.</i>
Purification:	Affinity Purified
Conjugation:	Unconjugated
Storage:	Store at -20°C as received.
Stability:	Stable for 12 months from date of receipt.
Predicted Protein Size:	18 kDa
Gene Name:	HD domain containing 2
Database Link:	<a href="#">NP_057147</a> <a href="#">Entrez Gene 51020 Human</a> <a href="#">Q7Z4H3</a>
Background:	The function of this protein remains unknown.
Synonyms:	C6orf74; CGI-130; dj16705.2; NS5ATP2
Note:	Immunogen Sequence Homology: Human: 100%



[View online »](#)

**Product images:**

Host: Rabbit; Target Name: HDDC2; Sample  
Tissue: Ovary Tumor lysates; Antibody Dilution:  
1.0 ug/ml