

## Product datasheet for **TA344255**

### CRPPA Rabbit Polyclonal Antibody

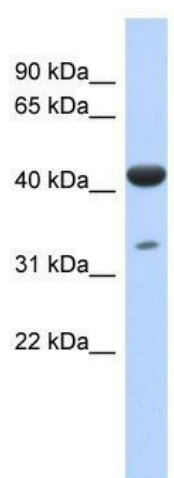
#### Product data:

Product Type:	Primary Antibodies
Applications:	WB
Recommended Dilution:	WB
Reactivity:	Human
Host:	Rabbit
Isotype:	IgG
Clonality:	Polyclonal
Immunogen:	The immunogen for anti-hCG_1745121 antibody: synthetic peptide directed towards the N terminal of human hCG_1745121. Synthetic peptide located within the following region: MTPQSLQTTFLLSLLFLVQGAHGRGHREDFRCSQRNQTHRSSLHYKP
Formulation:	Liquid. Purified antibody supplied in 1x PBS buffer with 0.09% (w/v) sodium azide and 2% sucrose. <i>Note that this product is shipped as lyophilized powder to China customers.</i>
Purification:	Affinity Purified
Conjugation:	Unconjugated
Storage:	Store at -20°C as received.
Stability:	Stable for 12 months from date of receipt.
Predicted Protein Size:	44 kDa
Gene Name:	isoprenoid synthase domain containing
Database Link:	<a href="#">NP_001094887</a> <a href="#">Entrez Gene 729920 Human</a> <a href="#">A4D126</a>
Background:	The specific function of hCG_1745121 is not yet known.
Synonyms:	hCG_1745121; MDDGA7; MDDGC7; Nip
Note:	Immunogen Sequence Homology: Human: 100%



[View online »](#)

## Product images:



WB Suggested Anti-hCG\_1745121 Antibody  
Titration: 0.2-1 ug/ml; ELISA Titer: 1:62500;  
Positive Control: Human Lung