

Product datasheet for **TA344254**

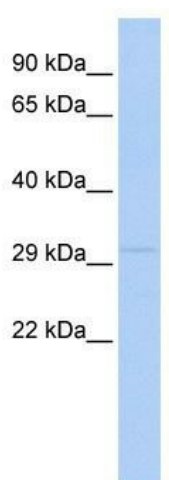
LYPD4 Rabbit Polyclonal Antibody

Product data:

Product Type:	Primary Antibodies
Applications:	WB
Recommended Dilution:	WB
Reactivity:	Human
Host:	Rabbit
Isotype:	IgG
Clonality:	Polyclonal
Immunogen:	The immunogen for anti-LYPD4 antibody: synthetic peptide directed towards the N terminal of human LYPD4. Synthetic peptide located within the following region: MGPQHRLRVQLFCLLGAISTLPRAGALLCYEATASRFRAVAFHNWKWLLM
Formulation:	Liquid. Purified antibody supplied in 1x PBS buffer with 0.09% (w/v) sodium azide and 2% sucrose. <i>Note that this product is shipped as lyophilized powder to China customers.</i>
Purification:	Affinity Purified
Conjugation:	Unconjugated
Storage:	Store at -20°C as received.
Stability:	Stable for 12 months from date of receipt.
Predicted Protein Size:	27 kDa
Gene Name:	LY6/PLAUR domain containing 4
Database Link:	NP_775777 Entrez Gene 147719 Human Q6UWN0
Background:	The specific function of LYPD4 is not yet known.
Synonyms:	SMR
Note:	Immunogen Sequence Homology: Human: 100%; Rat: 79%; Mouse: 79%



[View online »](#)

Product images:

WB Suggested Anti-LYPD4 Antibody Titration: 0.2-1 ug/ml; ELISA Titer: 1:312500; Positive Control: 721_B cell lysate