

Product datasheet for **TA344253**

LYPLA2 Rabbit Polyclonal Antibody

Product data:

Product Type:	Primary Antibodies
Applications:	IHC, WB
Recommended Dilution:	WB
Reactivity:	Human
Host:	Rabbit
Isotype:	IgG
Clonality:	Polyclonal
Immunogen:	The immunogen for anti-LYPLA2 antibody: synthetic peptide directed towards the N terminal of human LYPLA2. Synthetic peptide located within the following region: MCGNTMSVPLLDAATVSGAERETAAVIFLHGLGDTGHSWADALSTIRLP
Formulation:	Liquid. Purified antibody supplied in 1x PBS buffer with 0.09% (w/v) sodium azide and 2% sucrose. <i>Note that this product is shipped as lyophilized powder to China customers.</i>
Purification:	Affinity Purified
Conjugation:	Unconjugated
Storage:	Store at -20°C as received.
Stability:	Stable for 12 months from date of receipt.
Predicted Protein Size:	25 kDa
Gene Name:	lysophospholipase II
Database Link:	NP_009191 Entrez Gene 11313 Human O95372
Background:	Lysophospholipases are enzymes that act on biological membranes to regulate the multifunctional lysophospholipids. Lysophospholipases are enzymes that act on biological membranes to regulate the multifunctional lysophospholipids. There are alternatively spliced transcript variants described for this gene but the full length nature is not known yet.
Synonyms:	APT-2; APT2; DJ886K2.4

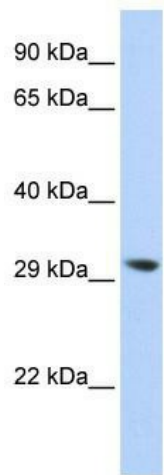


[View online »](#)

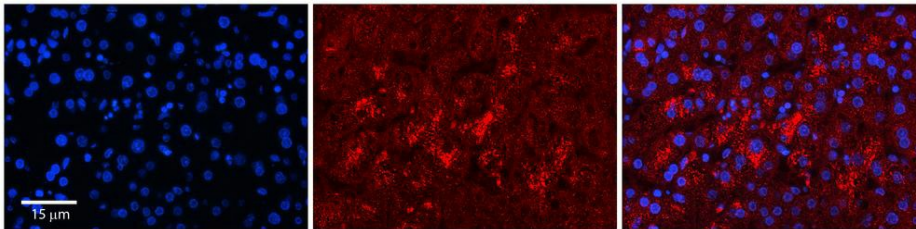
Note: Immunogen Sequence Homology: Dog: 100%; Pig: 100%; Rat: 100%; Horse: 100%; Human: 100%; Mouse: 100%; Bovine: 100%; Rabbit: 100%; Guinea pig: 100%

Protein Pathways: Glycerophospholipid metabolism

Product images:



WB Suggested Anti-LYPLA2 Antibody Titration: 0.2-1 ug/ml; ELISA Titer: 1:62500; Positive Control: 293T cell lysate
There is BioGPS gene expression data showing that LYPLA2 is expressed in HEK293T



Rabbit Anti-LYPLA2 Antibody; Formalin Fixed Paraffin Embedded Tissue: Human Adult Liver; Observed Staining: Cytoplasm in hepatocytes, strong signal, low tissue distribution; Primary Antibody Concentration: 1:100; Secondary Antibody: Donkey anti-Rabbit-Cy3