

Product datasheet for **TA344252**

MVP Rabbit Polyclonal Antibody

Product data:

Product Type:	Primary Antibodies
Applications:	WB
Recommended Dilution:	WB
Reactivity:	Human
Host:	Rabbit
Isotype:	IgG
Clonality:	Polyclonal
Immunogen:	The immunogen for anti-MVP antibody: synthetic peptide directed towards the N terminal of human MVP. Synthetic peptide located within the following region: MATEEFIIRIPPYHYIHVLDQNSNVSREVEGPKTYIRQDNERVLFAPMRM
Formulation:	Liquid. Purified antibody supplied in 1x PBS buffer with 0.09% (w/v) sodium azide and 2% sucrose. <i>Note that this product is shipped as lyophilized powder to China customers.</i>
Purification:	Affinity Purified
Conjugation:	Unconjugated
Storage:	Store at -20°C as received.
Stability:	Stable for 12 months from date of receipt.
Predicted Protein Size:	98 kDa
Gene Name:	major vault protein
Database Link:	NP_005106 Entrez Gene 9961 Human Q14764



[View online »](#)

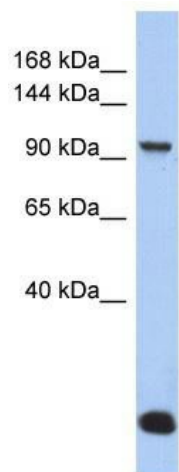
Background: MVP is required for normal vault structure. Vaults are multi-subunit structures that may act as scaffolds for proteins involved in signal transduction. Vaults may also play a role in nucleo-cytoplasmic transport. MVP down-regulates INFG-mediated STAT1 signaling and subsequent activation of JAK. MVP down-regulates SRC activity and signaling through MAP kinases. This gene encodes the major vault protein which is a lung resistance-related protein. Vaults are multi-subunit structures that may be involved in nucleo-cytoplasmic transport. This protein mediates drug resistance, perhaps via a transport process. It is widely distributed in normal tissues, and overexpressed in multidrug-resistant cancer cells. The protein overexpression is a potentially useful marker of clinical drug resistance. This gene produces two transcripts by using two alternative exon 2 sequences; however, the open reading frames are the same in both transcripts.

Synonyms: LRP; VAULT1

Note: Immunogen Sequence Homology: Dog: 100%; Pig: 100%; Rat: 100%; Horse: 100%; Human: 100%; Mouse: 100%; Bovine: 100%; Rabbit: 100%; Guinea pig: 93%; Zebrafish: 86%

Protein Families: Druggable Genome

Product images:



WB Suggested Anti-MVP Antibody Titration: 0.2-1 ug/ml; ELISA Titer: 1:1562500; Positive Control: COLO205 cell lysate